

# ***GENERAL PURPOSE ENGINE***

**GXH50U**

**PARTS CATALOGUE**

**1**



GXH50U

---

FOREWORD INDEX

**1**

---

ENGINE GROUP

**2**

---

PART NUMBER INDEX

**3**

---

PART NAME INDEX

**4**

---



**Instruction for use of parts catalogue**

- **This parts catalogue was prepared based on the latest information available as of July 10, 2005.**
- See the parts catalogue news for any revision that is made after July 10, 2005.
- **Always specify the part number when ordering a part.**
- Check the model, type, serial numbers, color, maker, and the size as needed before ordering a part.
- Note that the illustrations (part drawings) can differ from the actual parts in shape. They are given just to help you to refer to the parts.
- **When modifications or additions to this parts catalogue are made, a revised edition will be issued at an appropriate time, with successively progressing revision numbers on the cover. We recommend obtaining such revisions in order to keep your parts catalogue up-to-date at all times. To check whether a parts catalogue revision has been issued, please contact your Honda distributor.**

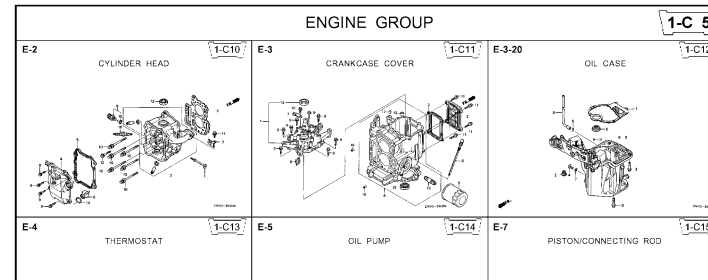
Initial version issue date July 10, 2005  
**Honda Motor Co., Ltd.**

**CONTENTS**

	Page	Address No.
● Instruction for use of parts catalogue .....	1	B 1
● How to refer to the part information .....	2	B 2
● Part catalogue structure .....	3	B 3
● When the parts were revised .....	4	B 4
● Abbreviations used in the parts catalogue .....	4	B 4
● How to check the part block and serial numbers .....	5	B 5
● Models, parts catalogue codes and applicable serial numbers .....	6	B 6
● Features of each type .....	7	B 7
● Fuel hose, general purpose hoses and vinyl hose .....	8	B 8
● FLAT RATE SERVICE TIME .....	9	B 9
● Illustrated index .....	14	B14
● ENGINE GROUP .....	16	C 1
● PART NO. INDEX .....	37	E 1
● PART NAME INDEX .....	39	F 1

How to refer to the part information

A Reference with "Illustrated index"



B Reference with "Part number index"

PART NO. INDEX

Part Number	Address	Page	Rel.	Part Number	Address	Page
06000				15212-ZW9-000	1-C14	3C
06316-ZW9-000	1-G9	88	1	15220-ZW9-003	1-C14	3C
11000				15332-ZW9-000	1-E8	5E
11300-ZW9-405	1-C11	27	1	15352-ZW9-A30	1-E11	5E
11300-ZW9-406	1-C11	27	1	15400-PFB-004	1-C11	27
11340-ZW9-000	1-C11	27	2	15422-ZW9-000	1-C14	3C
11342-ZW9-000	1-C11	27	3	15473-881-000	1-C14	3C
11381-ZW9-003	1-C12	28	1	15474-ZW9-000	1-C14	3C
				15611-921-000	1-C10	2E
				15655-ZW9-000	1-C11	27
				16000		
12000				16010-ZV4-005	1-D4	3E
12000-ZW9-405ZA	1-C11	27	4	16011-ZV4-005	1-D4	3E
12155-ZV4-A00	1-C13	29	1	16013-ZW9-003	1-D4	3E
12166-ZW9-000	1-C10	26	1	16016-ZW9-003	1-D4	3E
12209-GB4-681	1-C16	32	1	16016-ZW9-721	1-D4	3E
12210-ZW9-405ZA	1-C10	26	2	16023-ZW9-003	1-D4	3E
12216-ZE2-300	1-E8	58	1	16024-ZV4-650	1-D4	3E
	1-E11	58	1	16028-ZV4-650	1-D4	3E

C Reference with "Part name index"

PART NAME INDEX

Part name	Address	Page	Ref.
[ A ]			
ABSORBER , FUEL	1-E15	62	5
ARMATURE COMP.	1-D11	43	7
ARM COMP. , LINK JOINT	1-G6	85	18
ARM COMP. , SHIFT LINK	1-G6	85	14
ARM COMP. , TILT	1-F15	79	20
ARM , FUEL PUMP ROCKER	1-C16	32	4
ARM , REVERSE LOCK	1-F15	79	18
ARM , SHIFT LINK	1-F11	74	7
ARM , STOPPER	1-D1	33	12
ARM , THROTTLE REMOTE	1-F11	74	6
ARM , VALVE ROCKER	1-C16	32	3
[ B ]			
BAG , TOOL , 160MM	1-G5	84	10
BAND	1-G6	86	37
BAND B1 , WIRE	1-F6	69	1
BAND , CORD	1-F3	67	18
BAND , TUBE CLIP , 11MM	1-E15	63	20
BAND , TUBE CLIP , 12.5MM	1-E15	63	19

Address No. 1-C10

E-2 CYLINDER HEAD

Block No.

Ref No.

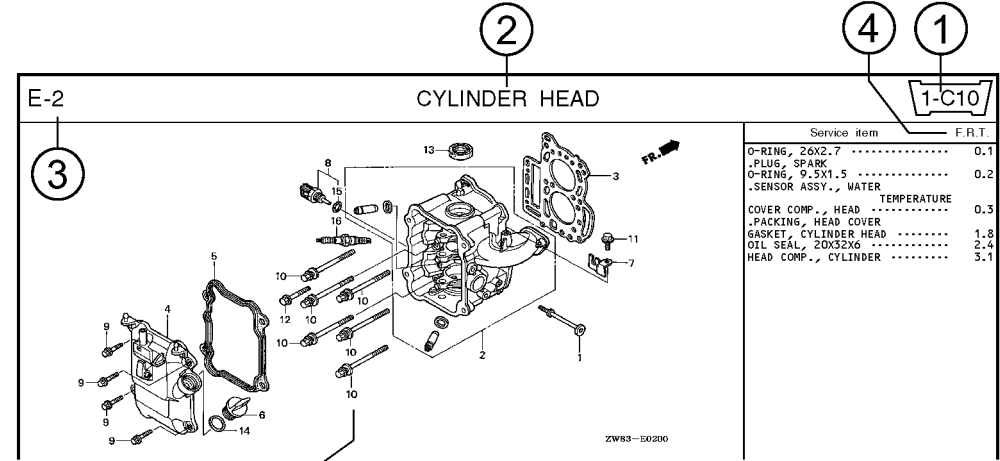
Ref. No.	Part No.	Description	Reqd. QTY						Serial No.	Parts catalogue code
			99D1	99D1	10D1	10D1	10B1	10B1		
1	12166-ZW9-000	STOPPER, ENGINE SIDE	2	2	2	2	2	2		
2	12210-ZW9-000ZA	HEAD COMP., CYLINDER	1	1	1	1	1	1		
3	12251-ZW9-003	GASKET, CYLINDER HEAD	1	1	1	1	1	1		
4	12310-ZW9-000	COVER COMP., HEAD	1	1	1	1	1	1		
5	12312-ZW9-000	PACKING, HEAD COVER	1	1	1	1	1	1		
6	15611-921-000	CAP, OIL (NO GAUGE)	1	1	1	1	1	1		
7	16617-ZW9-000	HOLDER, CABLE	1	1	1	1	1	1	SC,SG	
	16617-ZW9-010		1	1	1	1	1	1	1001800 LHC,LHD	
			1	1	1	1	1	1	1001801 LHC,LHD	
8	35673-ZW5-003	SENSOR ASSY., WATER	1	1	1	1	1	1		
9	90003-ZW9-000	BOLT, FLANGE, 6X22	4	4	4	4	4	4		
10	90007-ZW9-003	BOLT, FLANGE, 8X83	6	6	6	6	6	6		
11	90011-ZW9-000	BOLT, FLANGE, 6X14 (CT200)	1	1	1	1	1	1		
12	90020-ZW9-000	BOLT, FLANGE, 8X40	2	2	2	2	2	2		
13	91202-KJ9-003	OIL SEAL, 20X32X6	1	1	1	1	1	1		
14	91301-805-000	O-RING, 26X2.7	1	1	1	1	1	1		
15	91307-PK2-005	O-RING, 9.5X1.5 (HONDA KIKAKI)	1	1	1	1	1	1		
16	98059-55916	PLUG, SPARK (CR5EH-9)	2	2	2	2	2	2		
	98059-55926	PLUG, SPARK (U16FER9)	2	2	2	2	2	2		

ZW83-80200

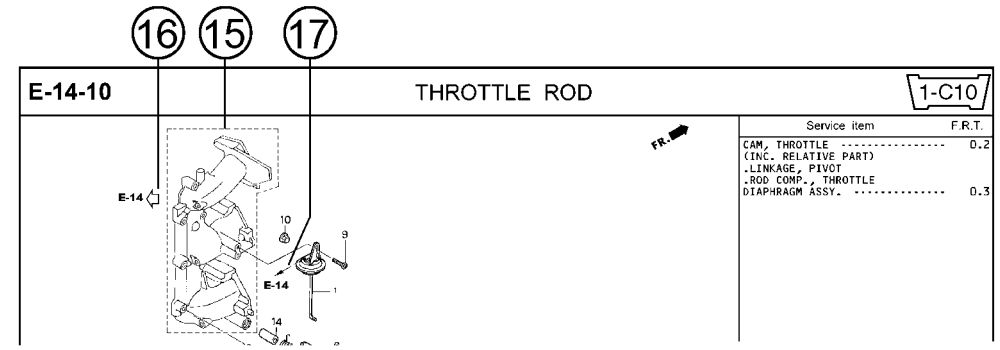
Page No.

2000.09.20 E

**Part catalogue structure**

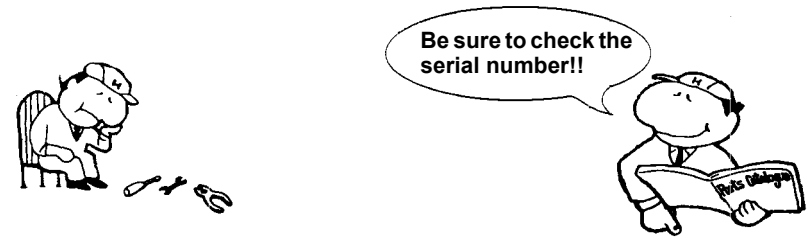


Ref. No.	Part No.	Description	Reqd. QTY						Serial No.	Parts catalogue code
			BF 9/901	BFP 9/901	BF 1001	BFP 1001	BF 1081	BFP 1081		
1	12166-zw9-000	STOPPER, ENGINE SIDE	2	2	2	2	2	2		
2	12210-zw9-000ZA	HEAD COMP., CYLINDER *NH8*	1	1	1	1	1	1		
3	12251-zw9-003	GASKET, CYLINDER HEAD	1	1	1	1	1	1		
4	12310-zw9-000	COVER COMP., HEAD	1	1	1	1	1	1		
5	12312-zw9-000	PACKING, HEAD COVER	1	1	1	1	1	1		
6	15611-921-000	CAP, OIL (NO GAUGE)	1	1	1	1	1	1		
7	16617-zw9-000	HOLDER, CABLE	1	1	1	1	1	1	SC,S6	
	16617-zw9-010		1	1	1	1	1	1	1001800 LHC,LHD	



- ① **Address number**
  - Address No. is provided (in place of the page No.) to help you refer to the part with the part No. or part name.
- ② **Block title** ③ **Block number**
- ④ **Service item/Flat rate time**
- ⑤ **Reference number**
  - Title number marked with the parenthesis or parentheses indicates that it continues from the previous page.
- ⑥ **Part number** ⑦ **Honda color code**
- ⑧ **Description**
- ⑨ **Assemblies**
  - Sections framed with broken lines in the exploded view drawings are available as complete assemblies. (Their individual parts can also be obtained.)
- ⑩ **Color description**
- ⑪ **Note**
  - Notes are shown with the parentheses in the part name column.
- ⑫ **Required quantity**
  - Required QTY shown in the parenthesis or parentheses indicates the optional part.
  - Required QTY marked with "N" Indicates the optional part that should be selected as needed.
  - Required QTY indicates the number of the part used in the block.
- ⑬ **Serial number**
- ⑭ **Type**
  - When the type column is blank, it indicates that the part is applicable to all types.
  - As the type of the actual unit may differ from the "parts catalogue, type" please refer to "Models, types and applicable serial numbers" for confirmation.
- ⑮ **[Dotted box]**
  - Parts enclosed within a dotted line [ ] are covered in a different block.
- ⑯ **[Hollow arrow]**
  - A hollow arrow [ ] indicates the block No. for the parts enclosed within a dotted line [ ] .
- ⑰ **[Solid arrow]**
  - A solid arrow [ ] indicates the block No. the part in question is connected to.

**When the parts were revised**



Ref. No.	Part No.	Description	Reqd. QTY						Serial No.
			BF 99D1	BFP 9.9D1	BF 10D1	BFP 10D1	BF 10B1	BFP 10B1	
1	12166-ZW9-000	STOPPER, ENGINE SIDE .....	2	2	2	2	2	2	
2	12210-ZW9-000ZA	HEAD COMP., CYLINDER *NH8*.....DARK GRAY	1	1	1	1	1	1	
3	12251-ZW9-003	GASKET, CYLINDER HEAD .....	1	1	1	1	1	1	
4	12310-ZW9-000	COVER COMP., HEAD .....	1	1	1	1	1	1	
5	12312-ZW9-000	PACKING, HEAD COVER .....	1	1	1	1	1	1	
6	15611-921-000	CAP, OIL (NO GAUGE) .....	1	1	1	1	1	1	
7	16617-ZW9-000	HOLDER, CABLE (###).....	1	1	1	1	1	1	SC, SG LHC, LHD 1001800 1001801
	16617-ZW9-010	.....	1	1	1	1	1	1	

The number has been used from the initial model without revision. When shown at the left side, it is applicable to the models of No.1001801 and the subsequent numbers. When shown at the right side, it is applicable to the models up to No.1001800.

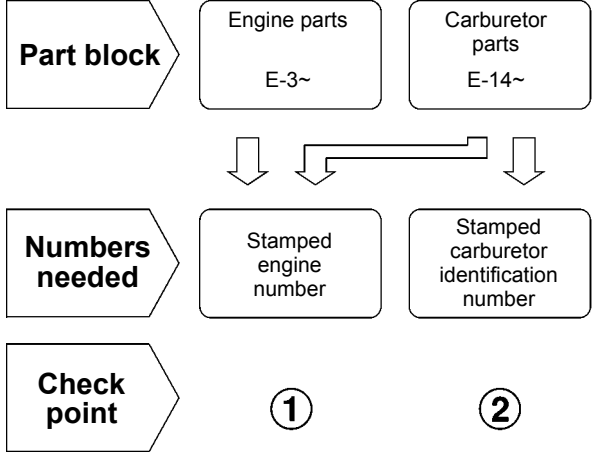
• The parts listed with "###" at the end of the parts name have limited supply period (parts not for sale).

**Abbreviations used in the parts catalogue**

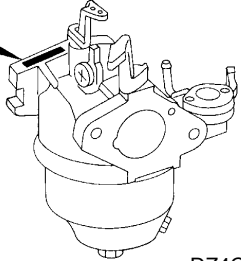
• The following abbreviations are used in the parts name column.

- A ..... Ampere
- A.C. .... Alternating current
- ASSY. .... Assembly
- AT. .... Automatic transmission
- C.D.I. .... Capacitive discharge ignition
- COMP. ... Complete
- D.C. .... Direct current
- EX. .... Exhaust
- G.F.C.I ... Ground fault circuit interruptor
- HEX. .... Hexagonal
- H.S.T. .... Hydrostatic transmission
- FR. ....Front
- IN. ....Inlet
- L (100L) .Link (100 Links)
- L. ....Left
- MM .....Millimeter
- MT. ....Manual Transmission
- P.T.O. ....Power take off
- R. ....Right
- RR. ....Rear
- STD. ....Standard
- T (22T) ...Tooth (22 Teeth)
- V .....Volt
- W .....Watt

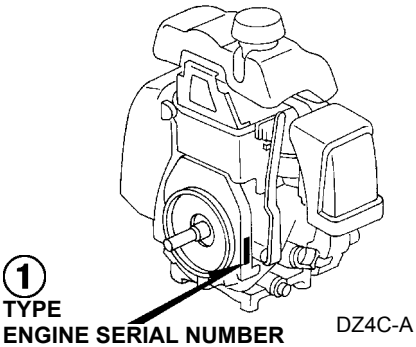
How to check the part block and serial numbers



②  
CARBURETOR  
IDENTIFICATION NUMBER



DZ4C-B



DZ4C-A

### Models, parts catalogue codes and applicable serial numbers

- Models, parts catalogue codes and applicable serial Nos. given in this parts catalogue can be identified as follows.

Model	Type	Parts catalogue type	Applicable engine serial No.	Applicable carburetor identification No.
GXH50U	QC	QC	GCAFK-1000001~	BF32E E
	QEB2	QEB2		BF32G A
	QEB4	QEB4		BF32E E
	QHA	QHA		
	QHE	QHE		
	QHM	QHM		
	QU	QU		BF32C E
	QXA	QXA		
	SE	SE		
	SPB	SPB		
	SPB4	SPB4		
	SXA	SXA		
	VSW4	VSW4		BF31H A
	WKE4	WKE4		BF32E E
WK4	WK4			

\* Of carburetor identification numbers, only the portions underlined in the example below are used for registration.

BF32E E KC ナ

Features of each type

• See the following table for the features of each type. (Items in brackets are optional)

Specifications		Model	GXH50U													
		Type	QC	QEB2	QEB4	QHA	QHE	QHM	QU	QXA	SE	SPB	SPB4	SXA	VSW4	WKE4
Crankshaft	15mm Ø Straight									●	●	●	●			
	15.8mm Ø Straight	●	●	●	●	●	●	●	●							
	M16 Stepped thread														●	●
	17mm Ø Tapered													●		
Spark arrester		(●)	(●)	(●)	(●)	(●)	●	(●)	(●)	(●)	(●)	●	(●)	(●)	(●)	(●)
Fuel tank		●	●	●				●	●	●	●	●	●		●	●
Oil level switch					●	●	●		●				●	●	●	
Engine stop switch		●	●	●				●	●	●		●	●		●	●
Oil alert					●	●	●		●				●		●	

## Fuel hose, general purpose hoses and vinyl hose

- The standard part fuel hose, general purpose hose and vinyl hose may be substituted by the coiled bulk part.
- When ordering the standard part fuel hose, general purpose hose and vinyl hose use the bulk part number written in the parts catalog in brackets ( ) underneath the part name.
- When exchanging the hose, cut and use at the specified length as mentioned in the part name.  
(For the method of cutting the bulk part, and method of filling out orders etc., please refer to the instructions issued with the bulk part.)

### Bulk part number of fuel hose, general purpose hose and vinyl hose.

Example: 9 5 0 0 1 - 7 5 0 0 1 - 5 0 M

**Bulk part number:**  
Refers to the bulk part.

**Marking code (fuel hose and general purpose hose)**

**Change code (Vinyl hose)**

Indicates number mark or change sequence, however, the code for the bulk part must be strictly 0 (zero).

**Types of code:**

- |             |  |                |  |              |   |
|-------------|--|----------------|--|--------------|---|
| • Fuel hose | 2: Red outside braid<br>(3 mm inside dia. only)        | • General hose | 1: Ash gray<br>2: Ash gray<br>3: Black<br>5: Black | • Vinyl hose | 1: Clear<br>2: Black<br>3: Light red<br>6: Light red<br>7: Pale black |
|             | 5: Black inside braid                                  |                |  |              |   |
|             | 3: Red (3 mm inside dia. only)                         |                |  |              |   |
|             | 4: Ash gray with red stripe<br>(3 mm inside dia. only) |                |  |              |   |
|             | 6: Black   |                |  |              |   |

**Lengths:**

- 001: 1 m (standard)  
003: 3 m  
008: 8 m } Application or specification of some parts is not settled.

**I.D code: (fuel hose and general purpose hose)**

- |            |                    |                    |                             |                             |
|------------|--------------------|--------------------|-----------------------------|-----------------------------|
| 30: 3.0 mm | 50: 5.0 mm         | 70: 7.0 mm         | 11: 11 mm                   | 12: 12 (outside dia. 17) mm |
| 35: 3.5 mm | 55: 5.3 mm, 5.5 mm | 75: 7.3 mm, 7.5 mm | 91: 12 (outside dia. 15) mm | 14: 14 mm                   |
| 45: 4.5 mm | 65: 6.5 mm         | 80: 8.0 mm         | 92: 12 (outside dia. 16) mm | 17: 17 mm                   |

**ID./OD. code: (vinyl hose)**

- |                         |                          |                           |                           |                           |
|-------------------------|--------------------------|---------------------------|---------------------------|---------------------------|
| 01: ID. 2.9, OD. 6.8 mm | 12: ID. 5.0, OD. 7.0 mm  | 21: ID. 8.0, OD. 9.0 mm   | 37: ID. 11.0, OD. 15.0 mm | 50: ID. 16.0, OD. 19.0 mm |
| 03: ID. 3.0, OD. 6.0 mm | 10: ID. 5.0, OD. 8.0 mm  | 23: ID. 8.0, OD. 12.0 mm  | 38: ID. 12.0, OD. 13.0 mm | 55: ID. 17.5, OD. 20.5 mm |
| 05: ID. 3.5, OD. 6.5 mm | 11: ID. 5.0, OD. 9.0 mm  | 25: ID. 9.0, OD. 11.0 mm  | 39: ID. 12.0, OD. 14.0 mm | 60: ID. 22.0, OD. 27.0 mm |
| 07: ID. 4.0, OD. 7.0 mm | 14: ID. 6.0, OD. 9.0 mm  | 27: ID. 9.0, OD. 13.0 mm  | 40: ID. 12.0, OD. 16.0 mm |                           |
| 08: ID. 4.5, OD. 6.5 mm | 17: ID. 7.0, OD. 9.0 mm  | 33: ID. 10.0, OD. 14.0 mm | 43: ID. 13.0, OD. 15.0 mm |                           |
| 09: ID. 4.5, OD. 8.0 mm | 19: ID. 7.0, OD. 11.0 mm | 36: ID. 11.0, OD. 13.0 mm | 45: ID. 14.0, OD. 18.0 mm |                           |

**Hose type:**

- 1: Fuel hose  
3: Vinyl hose  
5: General hose

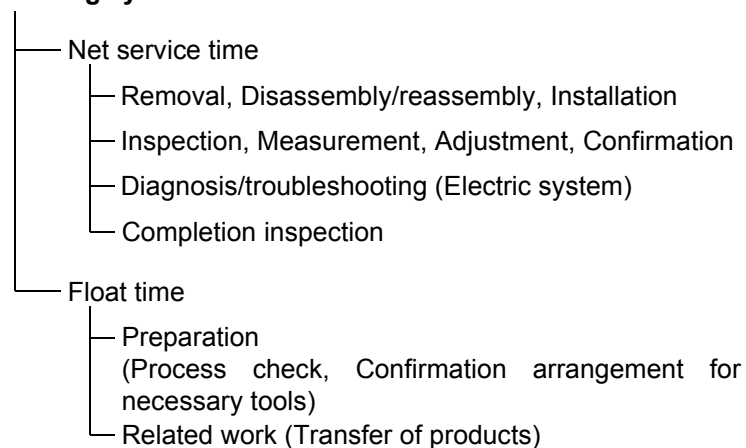
⊙ **CAUTION: It is DANGEROUS to confuse the fuel hose with the general purpose hose or vinyl hose.**

Never use a general purpose hose or vinyl hose in place of a fuel hose or vice versa. Always use the correct bulk part in the parts catalogue, according to the service manual or the instructions issued with the bulk part.

## FLAT RATE SERVICE TIME

Flat rate service time (FRT) means the standard time required to service a product, which is listed in this manual to help the dealers control the actual working process and calculate the service charge by using it as a guide.

### FRT setting system



\* Float time is set by multiplying the net service time by a given coefficient.

### Editorial style

The service items shown in the text are listed with the exchange work time for the repair sales parts as the subject. Other representative service items not using repair parts (removal/installation, adjustment, inspection/measuring, and other work) are listed collectively in the list in the preface, classified according to the work.

### FRT setting standard

- Decimal system (in unit of 0.1) is adopted to set FRT as it is convenient to calculate the wage.  
Example: (0.1) → 6 minutes, (0.2) → 12 minutes  
[Labor cost per hour] x [FRT] = [Wage]
- FRT is set with a hand tool.
- Service items and FRT can be subject to change depending on development of tools and service equipment and improvement in service procedure.

**Work procedure**

- As the work procedure is set with the work time according to the method in the separate Service Manual, refer to this Manual as required.
- Work methods permitting servicing in the shortest time still permitting assurance of safe work and product warranty are used for the setting of service items not listed in the Service Manual.
- Work basically is to be performed by one person, and when two or more people are required, setting is done as the total time for the number of people.
- The set value for the technological level of the workers uses a person with three years of experience in the repair of Honda products as the standard.
- Special tools and service equipment used to set FRT are those specified or recommended in Service Manual.

**Service item whose FRT is not presented**

- Accessories and service parts that are not listed to use in this manual.
  - Locations with little aging deterioration or breakage during normal use.
  - Service work that can be finished by one touch.
  - Service work that is seldom done (i.e. extremely small causes of trouble and service frequency).
  - Products and parts whose location for installation differs according to its status of use and application.
- \* When FRT is not presented, please calculate wages based on appropriate actual work time.

**Operation not included of FRT**

- Oil and coolant water draining, Waiting time for warming up operation and etc..
- Additional operation that involves removal/installation of standard exterior equipment.
- Indirect time spent for service by visiting the customer, trade-in, and delivery.
- Indirect time required for ordering and delivery of parts.
- Cost for grease, adhesive agent, etc. used for service work.

**Explanation of FRT by using an example  
(The example may differ from the actual presented items)**

Ref. No.	L.O.N.	(Relative ref. Number) Description	F.R.T.
①	1111L1	(1, 3, 4, 7) VALVE, INTAKE .....4.1	②
②		• NOTE: OHV type	③
③	1111L1A	• Includes: Engine removal and installation One head (intake all) add .....1.4	④

- ① Reference No. of the illustration of part that shows location of the replacement work.
- ② FRT is an abbreviation of Flat Rate Time indicating the standard service time required for the replacement.
- ③ LON is an abbreviation of Labor Operation Number, and it is a classification of the service items by the work unit code.

The same operation code is used regardless of the models.

Standard operation is indicated with 6 digits code, and additional operation is indicated with 7 digits code.

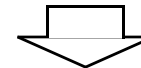
- ④ Indicating the intake valve replacement and FRT4.1.
- ⑤ Indicating FRT1.4 that will be added when additional operation (whole intake side of one cylinder head) is done in association with intake valve replacement.

- ⑥ Indicating work condition or application condition of the service item.
- ⑦ Indicating work contents that are included in the service item.
- ⑧ Indicating a reference No. whose operation and time are the same as FRT4.1 for the intake valve.

(The application range is limited to the service items without an LON setting within a same block.)

**How to refer to the service item by using the sample  
(intake valve replacement)**

Open to the page of the block where the intake valve's spare part illustration is shown.



Look for the intake valve illustration, and refer to the service item and FRT that agree with the reference No.



Major service items without using spare parts

(1) Removal/Installation, (2) Adjustment, (3) Inspection/  
Measurement, (4) Overhaul, (5) Other work

E: Engine, T: Transmission, D: Drive system, B: Body and related  
parts

### (2) Adjustment

	LON	DESCRIPTION	FRT
E	1113A1	<b>VALVE CLEARANCE-ADJUSTMENT</b> NOTE: For 1 product	0.3
	1163A0	<b>CONTROL, THROTTLE/GOVERNOR- ADJUSTMENT</b>	0.2
	3113A2	<b>CARBURETOR IDLE-ADJUSTMENT</b>	0.2

### (3) Inspection, Measurement, Cleaning

	LON	DESCRIPTION	FRT
E	1105A0	<b>ENGINE OIL-INSPECTION</b>	0.1
	3120A0	<b>AIR CLEANER-CLEANING</b> INCLUDES: Air cleaner-inspection	0.2
	3130A0	<b>SPARK ARRESTER-CLEANING</b>	0.2
	6140A0	<b>SPARK PLUG-ADJUSTMENT/CLEANING</b> NOTE: For 1 product	0.1

### (4) Overhaul

Work condition: The required Measurements, inspections, adjustments, and cleaning/washing of each part are performed, including the main body removal/installation work and the replacement of defective parts.

	LON	DESCRIPTION	FRT
E	3112A0	<b>CARBURETOR-OVERHAUL</b> INCLUDES: All necessary adjustment	0.4

### (5) Other work

	LON	DESCRIPTION	FRT
E	1101E1	<b>ENGINE OIL-CHANGE</b> INCLUDES: Engine oil-inspection	0.1

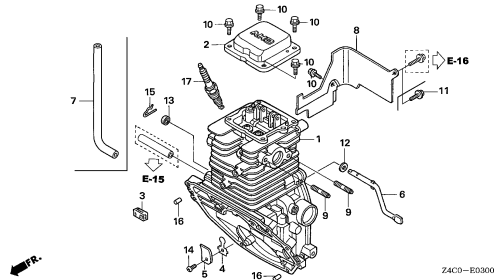
# ENGINE GROUP

**B14**

**E-3**

**CYLINDER BARREL**

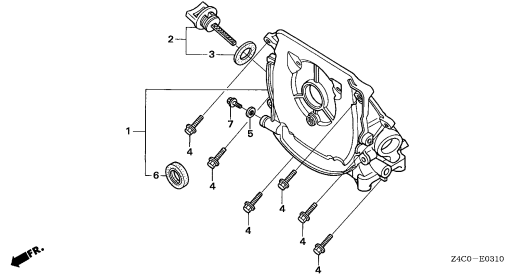
**C 1**



**E-3-10**

**OIL CASE**

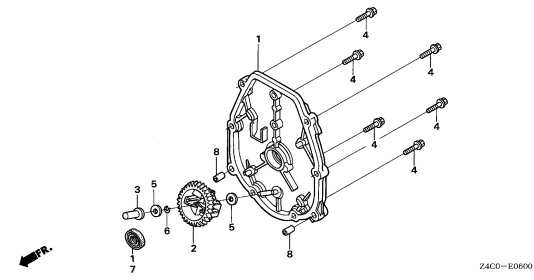
**C 2**



**E-6**

**CRANKCASE SIDE COVER**

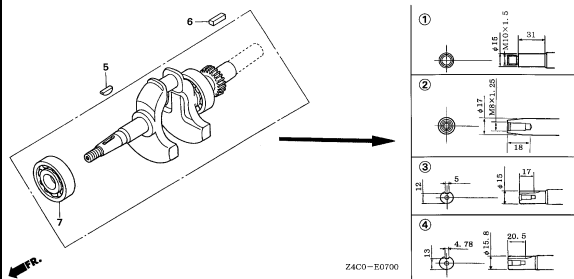
**C 3**



**E-7**

**CRANKSHAFT**

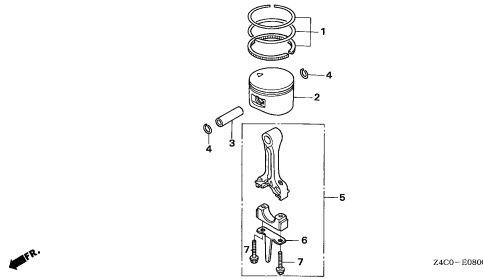
**C 4**



**E-8**

**PISTON/CONNECTING ROD**

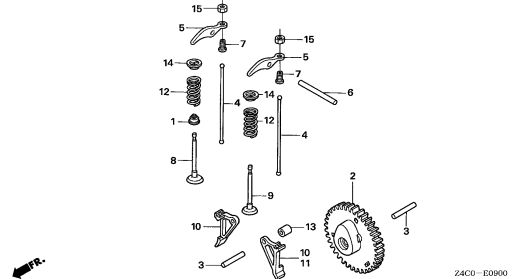
**C 5**



**E-9**

**CAMSHAFT**

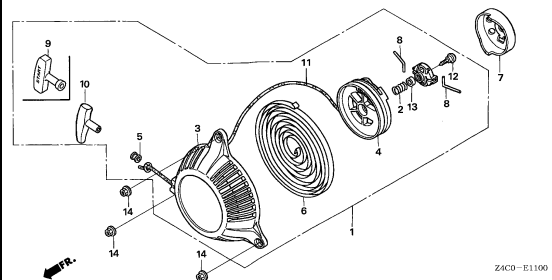
**C 6**



**E-11**

**RECOIL STARTER**

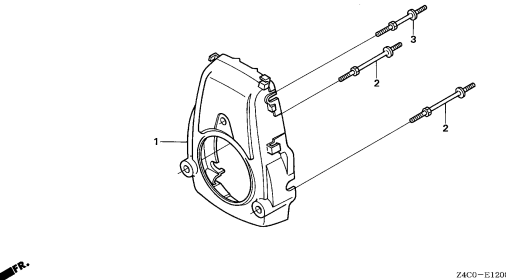
**C 9**



**E-12**

**FAN COVER**

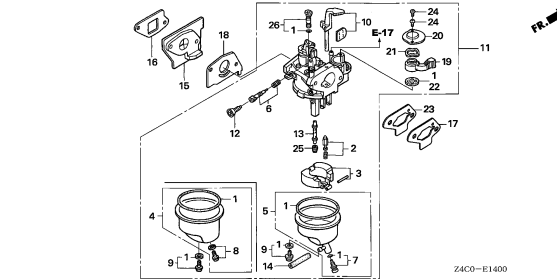
**C10**



**E-14**

**CARBURETOR(1)**

**C11**



**2**

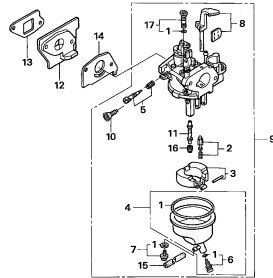
# ENGINE GROUP

**B15**

**E-14-1**

**CARBURETOR(2)**

**C13**

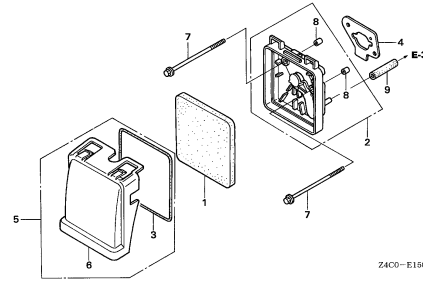


ZACO-E1401

**E-15**

**AIR CLEANER**

**C14**

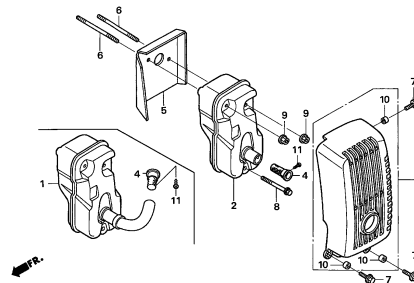


ZACO-E1500

**E-16**

**MUFFLER**

**C15**

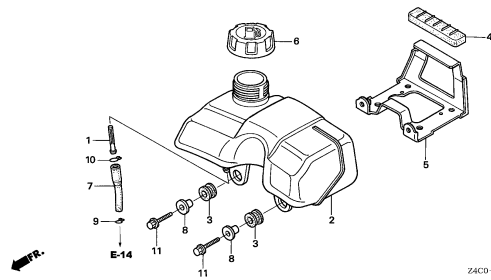


ZACO-E1600

**E-17**

**FUEL TANK**

**C16**

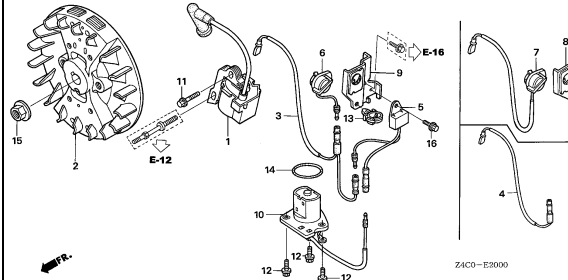


ZACO-E1700

**E-20**

**FLYWHEEL/IGNITION COIL**

**D 1**

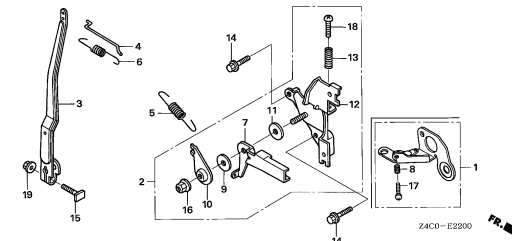


ZACO-E2000

**E-22**

**CONTROL(1)**

**D 2**

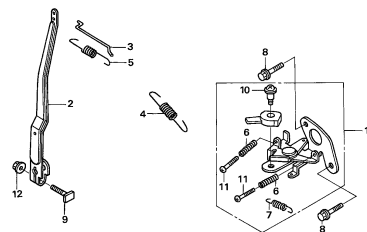


ZACO-E2200

**E-22-1**

**CONTROL(2)**

**D 3**

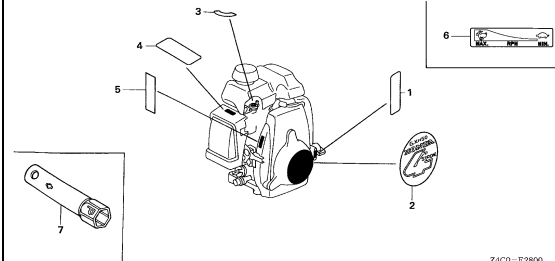


ZACO-E2201

**E-28**

**LABEL/TOOL**

**D 4**

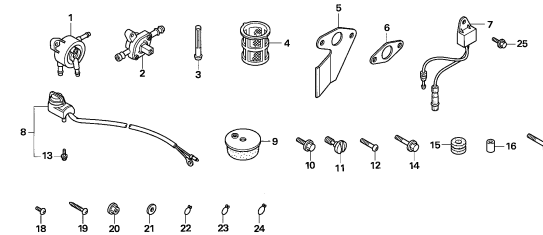


ZACO-E2800

**E-40**

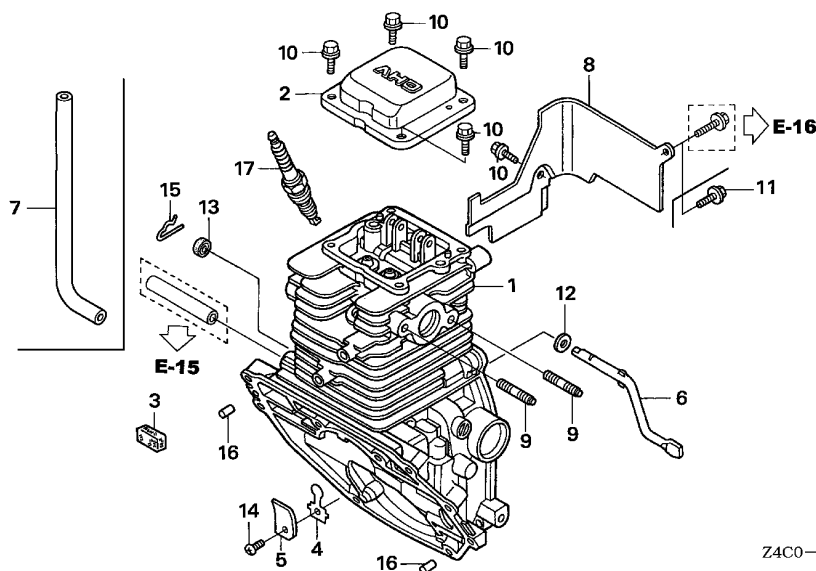
**OTHER PARTS**

**D 5**



ZACO-E4000

**2**



Ref. No.	L.O.N.	(Relative ref. Number) Description	F.R.T.
1	1101A0	BARREL, CYLINDER .....	1.7
2	1111D5	COVER, CYLINDER HEAD AND/OR PACKING, HEAD COVER .....	0.2
3	1111E5	FILTER, BREATHER .....	0.7
4		(5)	
	1171A8	VALVE, OIL OUTLET .....	0.7
6	1161B4	SHAFT, GOVERNOR ARM .....	1.2
8	4141E3	SHROUD, ENGINE .....	0.2
13	1101C4	OIL SEAL, GOVERNOR ARM SHAFT .....	1.2
17	6141C1	PLUG, SPARK .....	0.1
.INCLUDES: Spark plug check			

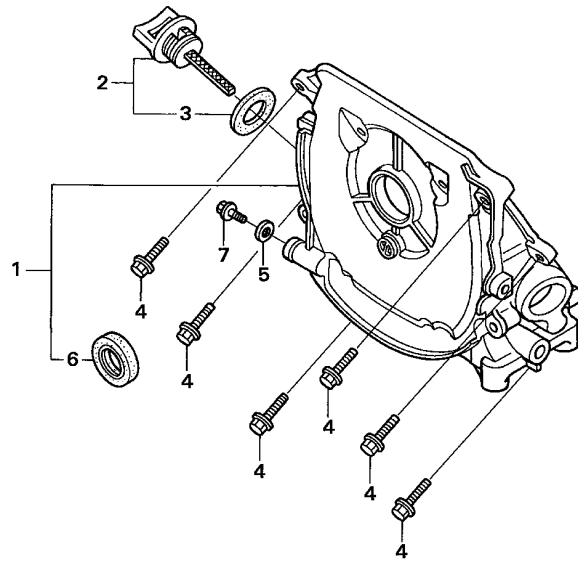
Z4C0-E0300

Ref. No.	Part No.	Description	Reqd. QTY	Serial No.	Parts catalogue code
			GXH 50 U		
1	12100-ZM7-416	BARREL COMP., CYLINDER .....	1	-----	VSW4
	12100-ZM7-417	.....	1	-----	QC,QEB2,QEB4,QHA,QHE,QHM,QU,QXA,SE,SPB,SPB4,SXA,WKE4,WK4
2	12311-ZM7-010	COVER, HEAD .....	1	-----	
3	12367-ZE6-010	FILTER, BREATHER .....	1	-----	
4	15571-ZM7-003	VALVE, OIL OUTLET .....	1	-----	
5	15572-ZM7-000	PLATE, STOPPER .....	1	-----	
6	16541-ZM7-000	SHAFT, GOVERNOR ARM .....	1	-----	
7	16882-ZM7-U10	TUBE, DIAPHRAGM .....	1	-----	VSW4
8	19630-ZM7-U10	SHROUD COMP. ....	1	-----	VSW4
	19631-ZM7-000	SHROUD .....	1	-----	QC,QEB2,QEB4,QHA,QHE,QHM,QU,QXA,SE,SPB,SPB4,SXA,WKE4,WK4
9	90002-ZM7-U10	BOLT, STUD, 5X14 .....	2	-----	VSW4
10	90003-892-000	BOLT, FLANGE, 5X12 .....	5	-----	
11	90003-892-000	BOLT, FLANGE, 5X12 .....	1	-----	QHA,QHE,QHM,VSW4
12	90443-ZC3-000	WASHER, 5.2X9 .....	1	-----	
13	91231-ZC3-003	OIL SEAL, 5X11X5 .....	1	-----	
14	93500-03005-0A	SCREW, PAN, 3X5 .....	1	-----	
15	94251-06000	PIN, LOCK, 6MM .....	1	-----	
16	96220-60150	ROLLER, 6X15 .....	2	-----	
17	98056-54750	PLUG, SPARK (U14FS-UB) (DENSO) .....	(1)	-----	VSW4
	98056-54757	PLUG, SPARK (U14FSR-UB) .....	1	-----	QEB2,QEB4,VSW4
			(1)	-----	QC,QHA,QHE,QHM,QU,QXA,SE,SPB,SPB4,SXA,WKE4,WK4
	98056-54770	PLUG, SPARK (C4HSB) (NGK) .....	(1)	-----	VSW4
	98056-54777	PLUG, SPARK (CR4HSB) .....	1	-----	QEB2,QEB4,VSW4
			(1)	-----	QC,QHA,QHE,QHM,QU,QXA,SE,SPB,SPB4,SXA,WKE4,WK4
	98056-55757	PLUG, SPARK (U16FSR-UB) .....	1	-----	QC,QHA,QHE,QHM,QU,QXA,SE,SPB,SPB4,SXA,WKE4,WK4
	98056-55777	PLUG, SPARK (CR5HSB) .....	1	-----	QC,QHA,QHE,QHM,QU,QXA,SE,SPB,SPB4,SXA,WKE4,WK4

E-3-10

OIL CASE

C 2



Z4C0-E0310

Ref. No.	L.O.N.	(Relative ref. Number) Description	F.R.T.
1	1101K5	CASE, OIL .....	0.7
6	1101E4	OIL SEAL, CRANKSHAFT :FRONT ..	0.7

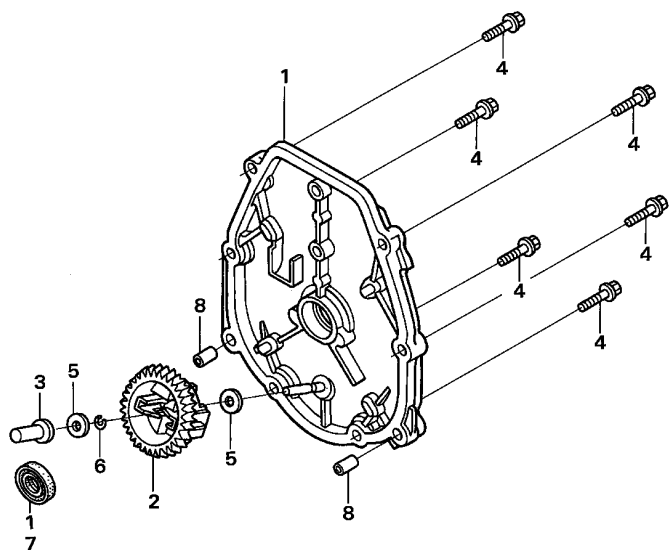
Ref. No.	Part No.	Description	Reqd. QTY		Serial No.	Parts catalogue code
			GXH	U		
1	11300-ZM7-406	CASE ASSY., OIL .....	1		----- QC,QEB2,QEB4,QU,SE,SPB,SPB4,WK4	
	11300-ZM7-407	.....	1		----- QHA,QHE,QHM,QXA,SXA,VSW4,WKE4	
2	15600-ZM7-003	CAP ASSY., OIL FILLER .....	1			
3	15625-ZE1-003	PACKING, OIL FILLER CAP .....	1			
4	90006-ZM7-000	BOLT, FLANGE, 5X23 .....	8			
5	90471-580-000	PACKING, 8MM .....	1			
6	91202-HC5-003	OIL SEAL, 17X27X5 (ARAI) .....	1			
7	95701-08012-08	BOLT, FLANGE, 8X12 .....	1			

2

E-6

CRANKCASE SIDE COVER

C 3



Z4C0-E0600

Ref. No.	L.O.N.	(Relative ref. Number) Description	F.R.T.
1	1101B3	COVER, CRANKCASE SIDE .....	0.4
2	1161C4	GOVERNOR ASSEMBLY .....	0.4
3	1161B6	SLIDER, GOVERNOR .....	0.3
7	1101E5	OIL SEAL, CRANKSHAFT :REAR ...	0.4

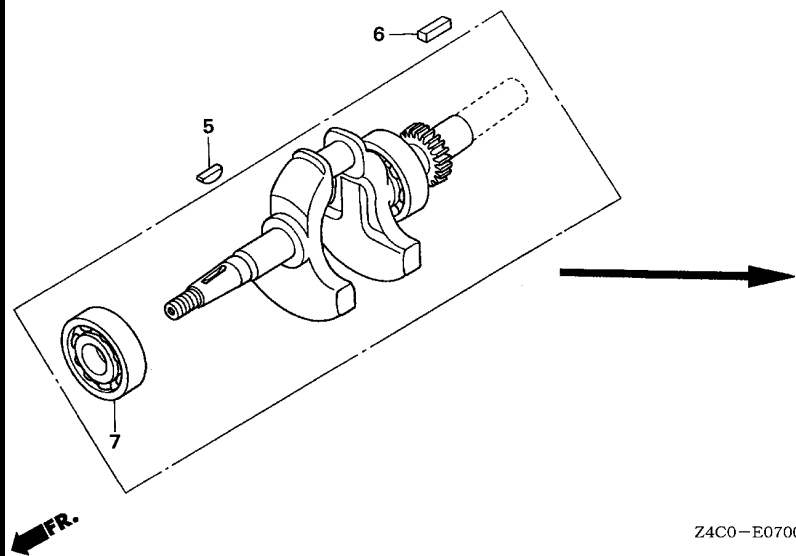
Ref. No.	Part No.	Description	Reqd. QTY	Serial No.	Parts catalogue code
			GXH 50 U		
1	11340-ZM7-U10	COVER COMP., CRANKCASE SIDE .	1	-----	VSW4
	11340-ZM7-V30	.....	1	-----	QEB2,QEB4
	11340-ZM7-020	.....	1	-----	SE,SPB,SPB4,SXA,WKE4,WK4
	11340-ZM7-802	.....	1	-----	QC,QHA,QHE,QHM,QU,QXA
2	16510-ZM7-000	GOVERNOR ASSY. ....	1		
3	16531-ZM7-000	SLIDER, GOVERNOR .....	1		
4	90006-ZM7-000	BOLT, FLANGE, 5X23 .....	6		
5	90441-ZM7-000	WASHER, 4.2X13 .....	2		
6	90602-ZM7-000	CLIP, GOVERNOR HOLDER .....	1		
7	91202-HC5-003	OIL SEAL, 17X27X5 (ARAI) .....	1		
8	94301-06100	DOWEL PIN, 6X10 .....	2		

2

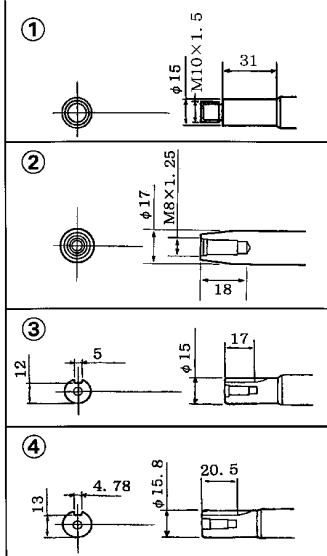
E-7

CRANKSHAFT

C 4



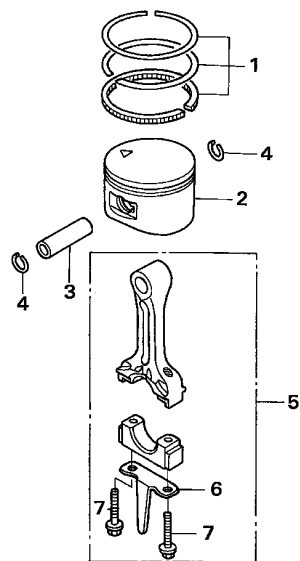
Z4C0-E0700



Ref. No.	L.O.N.	(Relative ref. Number) Description	F.R.T.
1		(2,3,4)	
1101F0		CRANKSHAFT .....	1.2
7	1101A4	BEARING, CRANKSHAFT :FRONT ...	1.4

Ref. No.	Part No.	Description	Reqd. QTY		Serial No.	Parts catalogue code
			GXH	U		
1	13310-ZM7-G00	CRANKSHAFT COMP. ....	1		----- WKE4,WK4	
2	13310-ZM7-U11	CRANKSHAFT COMP. ....	1		----- VSW4	
3	13310-ZM7-000	CRANKSHAFT COMP. ....	1		----- SE,SPB,SPB4,SXA	
4	13310-ZM7-V30	CRANKSHAFT COMP. ....	1		----- QEB2,QEB4	
	13310-ZM7-800	.....	1		----- QC,QHA,QHE,QHM,QU,QXA	
5	13331-ZM7-000	KEY, SPECIAL .....	1			
6	90741-ZM7-000	KEY, 4.78MM .....	(1)		----- QC,QEB2,QEB4,QHA,QHE,QHM,QU,QXA	
	90741-959-000	KEY, 5MM .....	(1)		----- SE,SPB,SPB4,SXA	
7	96100-62030-00	BEARING, RADIAL BALL, 6203 ..	1			

2



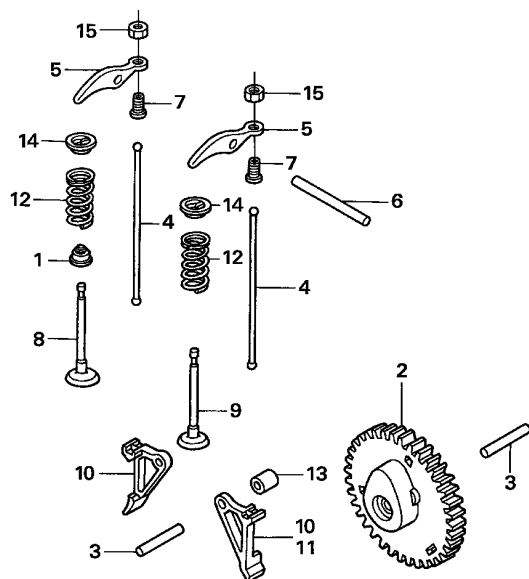
Z4C0-E0800

Ref. No.	L.O.N.	(Relative ref. Number) Description	F.R.T.
2		(1,3,5)	
1111R1		PISTON AND/OR RING SET AND/OR BEARING AND/OR ROD ..... .INCLUDES: Inspection/ Measurement/Cleaning	1.3



2

Ref. No.	Part No.	Description	Reqd. QTY		Serial No.	Parts catalogue code
			GXH	U		
1	13010-ZM7-D00	RING SET, PISTON (STD.)	1		----- VSW4	
	13010-ZM7-000	.....	1		----- QC,QEB2,QEB4,QHA,QHE,QHM,QU,QXA,SE,SPB,SPB4,SXA,WKE4,WK4	
2	13101-ZM7-010	PISTON (STD.)	1			
3	13111-122-000	PIN, PISTON, 10X33	1			
4	13115-147-000	CLIP, PISTON PIN, 10MM	2			
5	13200-ZM7-V30	ROD ASSY., CONNECTING	1		----- QEB2,QEB4	
	13200-ZM7-000	.....	1		----- QC,QHA,QHE,QHM,QU,QXA,SE,SPB,SPB4,SXA,VSW4,WKE4,WK4	
6	13281-ZM7-V30	DIPPER, CONNECTING ROD	1		----- QEB2,QEB4	
	13281-ZM7-000	.....	1		----- QC,QHA,QHE,QHM,QU,QXA,SE,SPB,SPB4,SXA,VSW4,WKE4,WK4	
7	90001-ZM7-000	BOLT, CONNECTING ROD	2			

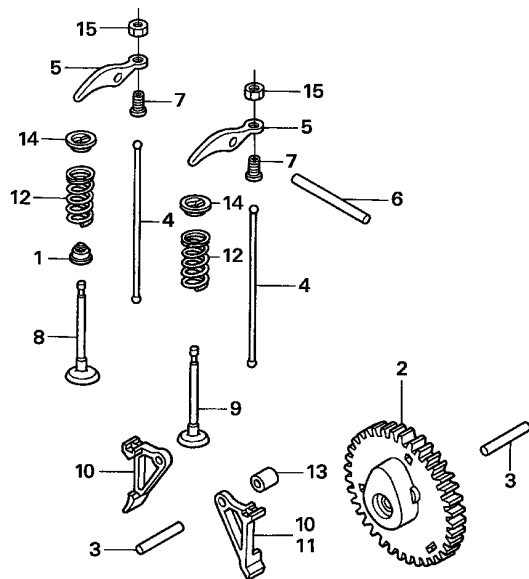


Z4C0-E0900

Ref. No.	L.O.N.	(Relative ref. Number) Description	F.R.T.
1	1111K2	SEAL, INTAKE VALVE STEM ..... .INCLUDES: Valve clearance adjustment	0.3
2	1111C2	CAMSHAFT .....	0.5
4	1111L6	ROD, PUSH :INTAKE ..... .INCLUDES: Valve clearance adjustment	0.5
	1111L6A	.Replace exhaust push rod add	0.1
	1111L7	ROD, PUSH :EXHAUST ..... .INCLUDES: Valve clearance adjustment	0.5
	1111L7A	.Replace intake push rod add	0.1
5	1111A2	ARM, ROCKER :INTAKE ..... .INCLUDES: Valve clearance adjustment	0.4
	1111A2A	.Replace exhaust rocker arm add	0.1
	1111A1	ARM, ROCKER :EXHAUST ..... .INCLUDES: Valve clearance adjustment	0.4
	1111A1A	.Replace intake rocker arm add	0.1
8	1111L1	VALVE, INTAKE ..... .INCLUDES: Valve clearance adjustment and reface	1.4
+			

Ref. No.	Part No.	Description	Reqd. QTY	Serial No.	Parts catalogue code
			GXH 50 U		
1	12209-ZM7-003	SEAL, VALVE STEM .....	1		
2	14100-ZM7-010	CAMSHAFT ASSY. ....	1	-----	QC,QHA,QHE,QHM,QU,QXA,SE,SPB,SPB4,SXA,VSW4,WKE4,WK4
	14100-Z0G-000	.....	1	-----	QEB2,QEB4
3	14126-Z0G-003	ROLLER (5X29.8) .....	2		
4	14410-ZM7-000	ROD, PUSH .....	2		
5	14431-ZM7-000	ARM, VALVE ROCKER .....	2		
6	14435-ZM7-003	ROLLER (4X37.8) .....	1		
7	14451-ZM7-000	PIVOT, ROCKER ARM .....	2		
8	14711-ZM7-000	VALVE, IN. ....	1		
9	14721-ZM7-000	VALVE, EX. ....	1		
10	14731-ZM7-013	LIFTER, VALVE .....	1	-----	QEB2,QEB4
			2	-----	QC,QHA,QHE,QHM,QU,QXA,SE,SPB,SPB4,SXA,VSW4,WKE4,WK4
11	14732-Z0G-003	LIFTER, EX. VALVE .....	1	-----	QEB2,QEB4
12	14751-ZM7-000	SPRING, VALVE .....	2		
13	14754-ZM7-000	COLLAR, LIFTER .....	1		
14	14771-ZM3-010	RETAINER, VALVE SPRING .....	2		
15	90206-KM3-000	NUT, TAPPET ADJUSTING .....	2		

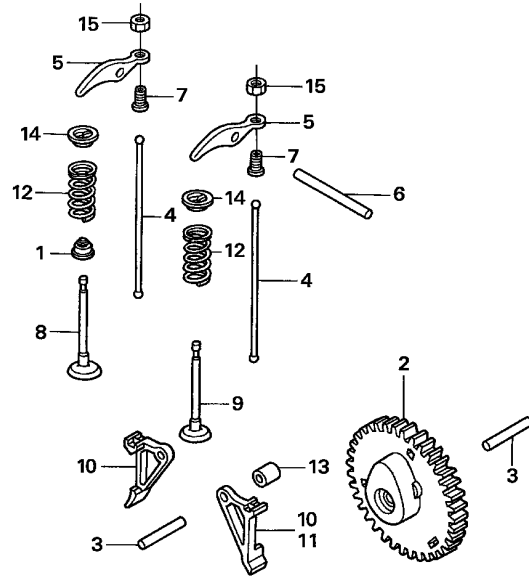




Z4C0-E0900

FR.

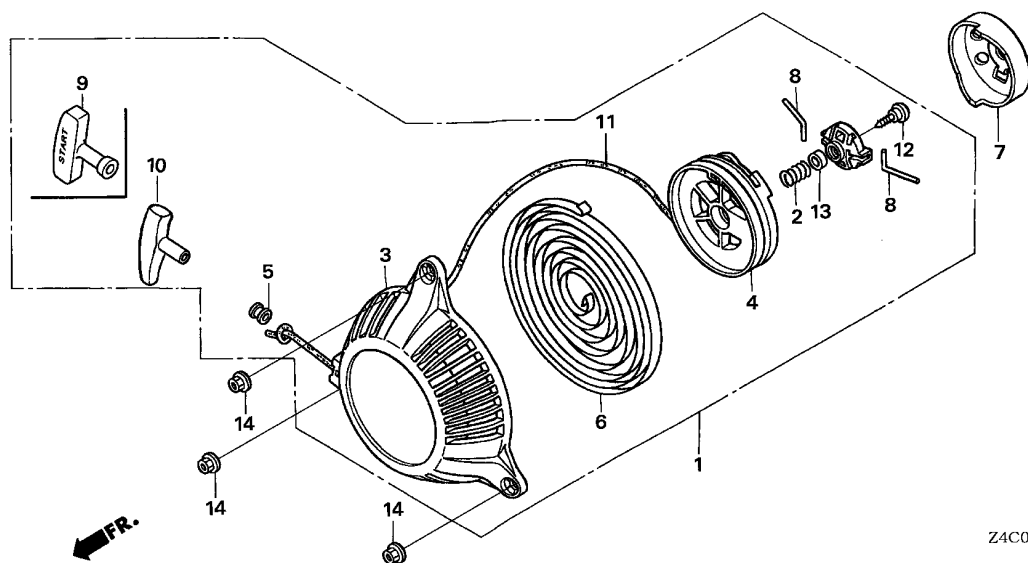
Ref. No.	L.O.N.	(Relative ref. Number) Description	F.R.T.
+ 8	1111L1E	.Replace intake and exhaust all add .....	0.1
9	1111L0	VALVE, EXHAUST .....	1.4
		.INCLUDES: Valve clearance adjustment and reface	
	1111L0E	.Replace intake and exhaust all add .....	0.1
10		(11)	
	1111L9	LIFTER, VALVE :INTAKE .....	0.5
		.NOTE: Same time for two units	
		.INCLUDES: Valve clearance adjustment	
	1111M0	LIFTER, VALVE :EXHAUST .....	0.5
		.NOTE: Same time for two units	
		.INCLUDES: Valve clearance adjustment	
12	1111P3	SPRING, VALVE :INTAKE .....	0.5
		.INCLUDES: Valve clearance adjustment	
	1111P3A	.Replace intake and exhaust all add .....	0.1
	1111P4	SPRING, VALVE :EXHAUST .....	0.5
		.INCLUDES: Valve clearance adjustment	
+			



FR.

Z4C0-E0900

Ref. No.	L.O.N. (Relative ref. Number)	Description	F.R.T.
+12	1111P4A	.Replace intake and exhaust all add .....	0.1



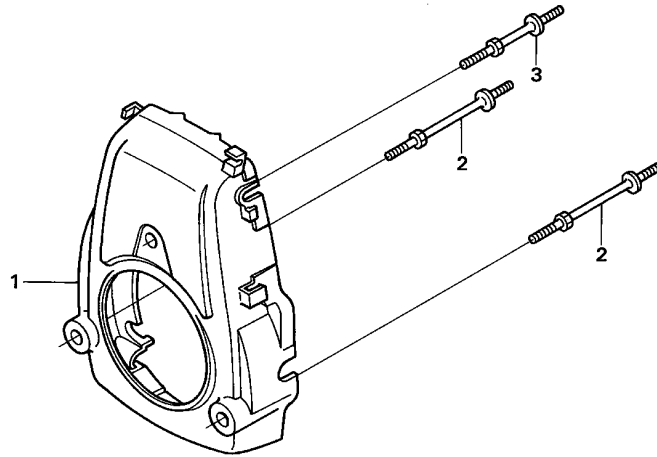
Ref. No.	L.O.N.	(Relative ref. Number) Description	F.R.T.
1	1121B9	STARTER, RECOIL .....	0.1
4	1121B1	REEL, RECOIL STARTER .....	0.3
6	1121B7	SPRING, RECOIL STARTER RETURN .....	0.3
7	1121A9	PULLEY, RECOIL STARTER .....	0.2
8		(2,13)	
8	1121D3	ARM, RECOIL STARTER SWING ....	0.1
9		(10)	
	1121A3	GRIP, RECOIL STARTER .....	0.1
11	1121B3	ROPE, RECOIL STARTER .....	0.3

Ref. No.	Part No.	Description	Reqd. QTY	Serial No.	Parts catalogue code
1	28400-ZM7-V31	STARTER ASSY., RECOIL .....	1	-----	QEB2,QEB4
	28400-ZM7-003	.....	1	-----	QC,QHA,QHE,QHM,QU,QXA,SE,SPB,SPB4,SXA,VSW4,WKE4,WK4
2	28404-968-004	SPRING, FRICTION .....	1	-----	
3	28410-ZM7-V31	CASE COMP., STARTER .....	1	-----	QEB2,QEB4
	28414-ZM7-003	CASE, RECOIL STARTER .....	1	-----	QC,QHA,QHE,QHM,QU,QXA,SE,SPB,SPB4,SXA,VSW4,WKE4,WK4
4	28421-ZM7-003	REEL, RECOIL STARTER .....	1	-----	
5	28433-ZM3-003	GUIDE, ROPE .....	1	-----	QC,QHA,QHE,QHM,QU,QXA,SE,SPB,SPB4,SXA,VSW4,WKE4,WK4
6	28442-ZL8-003	SPRING, RECOIL STARTER .....	1	-----	
7	28451-ZM7-003	PULLEY, RECOIL STARTER .....	1	-----	
8	28459-ZM7-003	ARM, SWING .....	2	-----	
9	28461-ZH8-003	GRIP, STARTER .....	1	-----	QEB2,QEB4
10	28461-ZM3-003	KNOB, RECOIL STARTER .....	1	-----	QC,QHA,QHE,QHM,QU,QXA,SE,SPB,SPB4,SXA,VSW4,WKE4,WK4
11	28462-ZM7-003	ROPE, RECOIL STARTER .....	1	-----	QC,QHA,QHE,QHM,QU,QXA,SE,SPB,SPB4,SXA,VSW4,WKE4,WK4
	28462-Z0G-003	.....	1	-----	QEB2,QEB4
12	90012-ZM3-003	SCREW, SETTING .....	1	-----	
13	91504-ZM7-003	COLLAR .....	1	-----	
14	94050-05000	NUT, FLANGE, 5MM .....	3	-----	

E-12

FAN COVER

C10



Z4C0-E1200

FR.

Ref. No.	L.O.N.	(Relative ref. Number) Description	F.R.T.
1	1141G8	COVER, ENGINE COOLING FAN ....	0.2

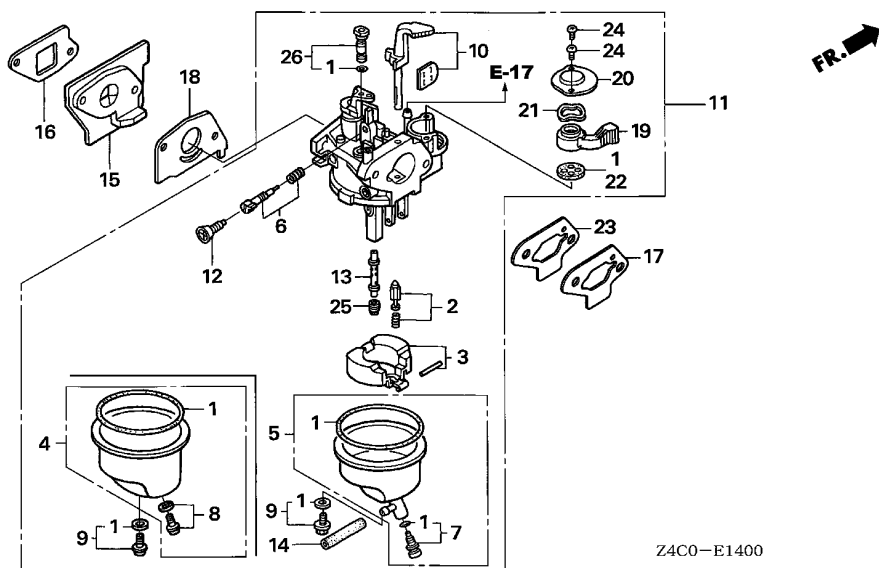
Ref. No.	Part No.	Description	Reqd. QTY		Serial No.	Parts catalogue code
			GXH	U		
1	19610-ZM7-000ZC	COVER COMP., FAN	1			
	*R280*	.....POWER RED	1		----- QC, QEB2, QEB4, QHA, QHE, QHM, QU, QXA, SE, SPB, SPB4, SXA, WKE4, WK4	
	19610-ZM7-000ZD	*NH1*.....BLACK	1		----- SPB4, VSW4	
2	90042-ZM7-000	BOLT, STUD (A) .....	2			
3	90043-ZM7-000	BOLT, STUD (B) .....	1			

2

E-14

CARBURETOR(1)

C11



Z4C0-E1400

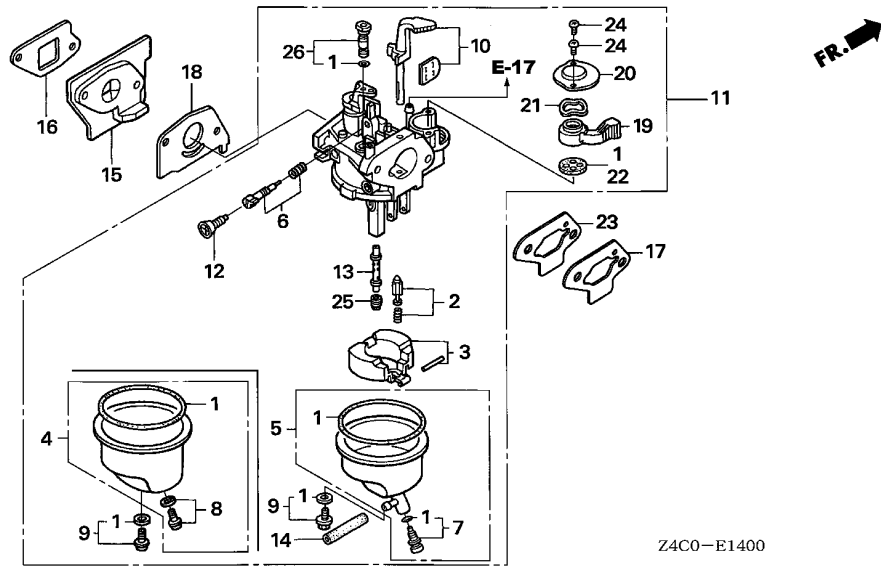
Ref. No.	L.O.N.	(Relative ref. Number) Description	F.R.T.
1	3111B1	GASKET SET, CARBURETOR .....	0.3
2	3111E1	VALVE SET, FLOAT AND/OR FLOAT SET .....	0.3
6	3111D7	SCREW SET, PILOT .....	0.2
10	8101C5	CHOKE SET, CARBURETOR .....	0.2
11	3111F3	CARBURETOR .....	0.2
14	3111H8	TUBE, FLOAT CHAMBER .....	0.1
15	3111C0	INSULATOR, CARBURETOR AND/OR PACKING, INSULATOR .....	0.2
18	3111C8	PACKING, CARBURETOR .....	0.2
22	3101C5	PACKING, FUEL COCK .....	0.2
25	3111C3	JET, MAIN .....	0.3

Ref. No.	Part No.	Description	Reqd. QTY	Serial No.	Parts catalogue code
1	16010-ZG0-015	GASKET SET .....	1	QC, QHA, QHE, QHM, QU, QXA, WKE4, WK4	
	16010-ZM7-003	.....	1	QEB2, QEB4, SE, SPB, SPB4, SXA	
2	16011-ZE0-005	VALVE SET, FLOAT .....	1	QC, QEB2, QEB4, QHA, QHE, QHM, QU, QXA, SE, SPB, SPB4, SXA, WKE4, WK4	
3	16013-ZG0-811	FLOAT SET .....	1	QC, QEB2, QEB4, QHA, QHE, QHM, QU, QXA, SE, SPB, SPB4, SXA, WKE4, WK4	
4	16015-ZG0-811	CHAMBER SET, FLOAT .....	1	QC, QHA, QHE, QHM, QU, QXA, WKE4, WK4	
5	16015-ZM7-003	CHAMBER SET, FLOAT .....	1	QEB2, QEB4, SE, SPB, SPB4, SXA	
6	16016-ZH7-W01	SCREW SET, PILOT .....	1	QC, QEB2, QEB4, QHA, QHE, QHM, QU, QXA, SE, SPB, SPB4, SXA, WKE4, WK4	
7	16024-ZB9-005	SCREW SET, DRAIN .....	1	QEB2, QEB4, SE, SPB, SPB4, SXA	
8	16024-ZE1-811	SCREW SET, DRAIN .....	1	QC, QHA, QHE, QHM, QU, QXA, WKE4, WK4	
9	16028-ZG0-811	SCREW SET .....	1	QC, QEB2, QEB4, QHA, QHE, QHM, QU, QXA, SE, SPB, SPB4, SXA, WKE4, WK4	
10	16044-ZM7-003	CHOKE SET .....	1	QEB2, QEB4	
	16044-ZM7-801	.....	1	QC, QHA, QHE, QHM, QU, QXA, SE, SPB, SPB4, SXA, WKE4, WK4	
11	16100-ZM7-G15	CARBURETOR ASSY. (BF32E E) ..	1	QC, QHA, QHE, QHM, QU, QXA, WKE4, WK4	
	16100-ZM7-V31	CARBURETOR ASSY. (BF32G A) ..	1	QEB2, QEB4	
	16100-ZM7-805	CARBURETOR ASSY. (BF32C E) ..	1	SE, SPB, SPB4, SXA	
12	16124-ZE0-005	SCREW, THROTTLE STOP .....	1	QC, QEB2, QEB4, QHA, QHE, QHM, QU, QXA, SE, SPB, SPB4, SXA, WKE4, WK4	
13	16166-ZM7-003	NOZZLE, MAIN .....	1	QEB2, QEB4	
	16166-ZN4-801	.....	1	QC, QHA, QHE, QHM, QU, QXA, SE, SPB, SPB4, SXA, WKE4, WK4	
14	16199-ZM7-003	TUBE .....	1	SE, SPB, SPB4, SXA	
	95003-05010-31	TUBE, VINYL, 3.5X6.5X100 (95003-05001-60M)	1	QEB2, QEB4	
15	16211-ZM7-000	INSULATOR, CARBURETOR .....	1	QC, QEB2, QEB4, QHA, QHE, QHM, QU, QXA, SE, SPB, SPB4, SXA, WKE4, WK4	
16	16212-ZM7-000	PACKING, INSULATOR .....	1	QC, QEB2, QEB4, QHA, QHE, QHM, QU, QXA, SE, SPB, SPB4, SXA, WKE4, WK4	
17	16220-ZM7-V30	SPACER, CARBURETOR .....	1	QEB2, QEB4	
18	16221-ZG0-801	PACKING, CARBURETOR .....	1	QC, QEB2, QEB4, QHA, QHE, QHM, QU, QXA, SE, SPB, SPB4, SXA, WKE4, WK4	
19	16953-ZG0-812	LEVER, COCK .....	1	QC, QEB2, QEB4, QHA, QHE, QHM, QU, QXA, SE, SPB, SPB4, SXA, WKE4, WK4	

# E-14

# CARBURETOR(1)

C12



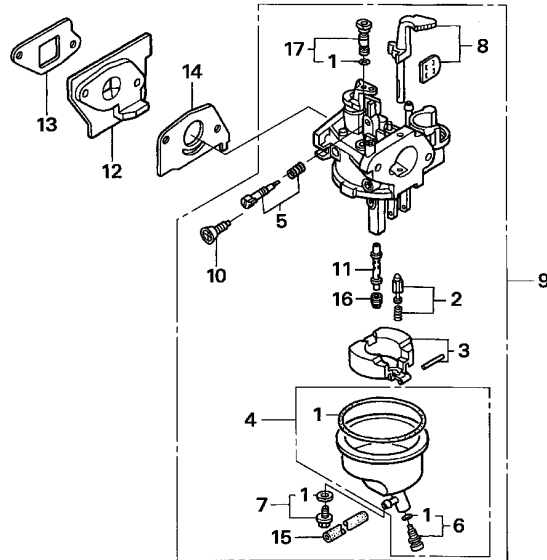
Ref. No.	Part No.	Description	Reqd. QTY		Serial No.	Parts catalogue code
			GXH	U		
20	16954-ZE1-812	PLATE, LEVER SETTING	1			QC,QEB2,QEB4,QHA,QHE,QHM,QU,QXA,SE,SPB,SPB4,SXA,WKE4,WK4
21	16956-ZE1-811	SPRING, COCK LEVER	1			QC,QEB2,QEB4,QHA,QHE,QHM,QU,QXA,SE,SPB,SPB4,SXA,WKE4,WK4
22	16957-ZE1-812	PACKING, FUEL COCK	1			QC,QEB2,QEB4,QHA,QHE,QHM,QU,QXA,SE,SPB,SPB4,SXA,WKE4,WK4
23	17228-ZM7-000	PACKING, AIR CLEANER	1			QEB2,QEB4
24	93500-03006-1H	SCREW, PAN, 3X6	2			QC,QEB2,QEB4,QHA,QHE,QHM,QU,QXA,SE,SPB,SPB4,SXA,WKE4,WK4
25	99101-ZG0-0480	JET, MAIN, #48	(1)			QC,QEB2,QEB4,QHA,QHE,QHM,QU,QXA,SE,SPB,SPB4,SXA,WKE4,WK4
	99101-ZG0-0500	JET, MAIN, #50	(1)			QC,QEB2,QEB4,QHA,QHE,QHM,QU,QXA,SE,SPB,SPB4,SXA,WKE4,WK4
	99101-ZG0-0520	JET, MAIN, #52	1			QC,QEB2,QEB4,QHA,QHE,QHM,QU,QXA,SE,SPB,SPB4,SXA,WKE4,WK4
26	99204-ZE2-0350	JET SET, PILOT, #35	1			QC,QEB2,QEB4,QHA,QHE,QHM,QU,QXA,SE,SPB,SPB4,SXA,WKE4,WK4

2

E-14-1

CARBURETOR(2)

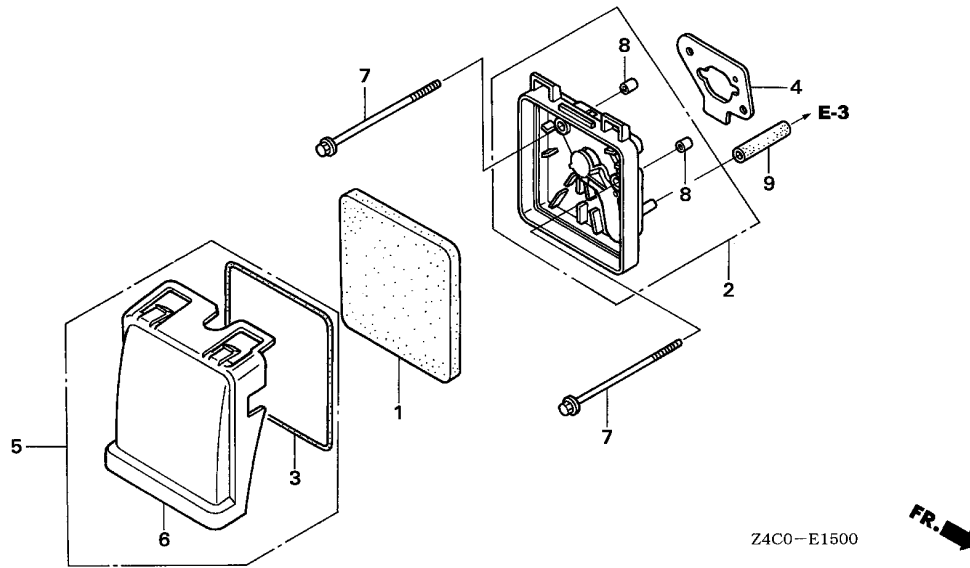
C13



Z4C0-E1401

Ref. No.	L.O.N.	(Relative ref. Number) Description	F.R.T.
1	3111B1	GASKET SET, CARBURETOR	0.3
2	3111E1	VALVE SET, FLOAT AND/OR FLOAT SET	0.3
5	3111D7	SCREW SET, PILOT	0.2
8	8101C5	CHOKE SET, CARBURETOR	0.2
9	3111F3	CARBURETOR	0.2
12	3111C0	INSULATOR, CARBURETOR AND/OR PACKING, INSULATOR	0.2
14	3111C8	PACKING, CARBURETOR	0.2
15	3111H8	TUBE, FLOAT CHAMBER	0.1
16	3111C3	JET, MAIN	0.3

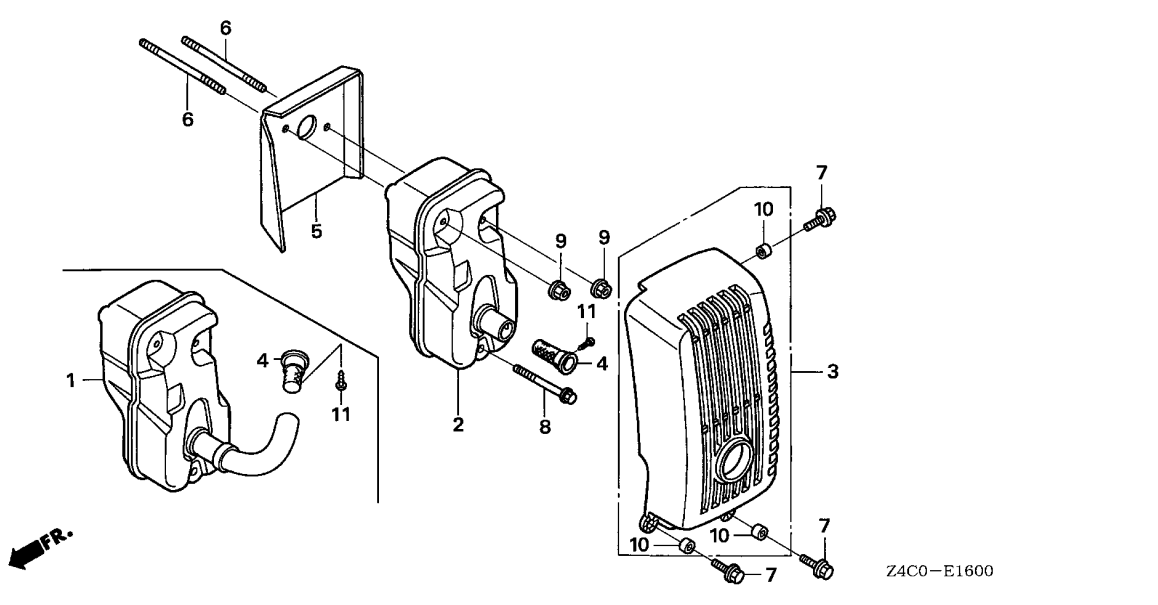
Ref. No.	Part No.	Description	Reqd. QTY	Serial No.	Parts catalogue code
			GXH 50 U		
1	16010-ZM7-D01	GASKET SET	1	-----	VSW4
2	16011-ZE0-005	VALVE SET, FLOAT	1	-----	VSW4
3	16013-ZG0-811	FLOAT SET	1	-----	VSW4
4	16015-ZM7-003	CHAMBER SET, FLOAT	1	-----	VSW4
5	16016-ZH7-W01	SCREW SET, PILOT	1	-----	VSW4
6	16024-ZB9-005	SCREW SET, DRAIN	1	-----	VSW4
7	16028-ZG0-811	SCREW SET	1	-----	VSW4
8	16044-Z0D-003	CHOKE SET	1	-----	VSW4
9	16100-ZM7-U31	CARBURETOR ASSY. (BF31H A)	1	-----	VSW4
10	16124-ZE0-005	SCREW, THROTTLE STOP	1	-----	VSW4
11	16166-ZN4-801	NOZZLE, MAIN	1	-----	VSW4
12	16211-ZM7-000	INSULATOR, CARBURETOR	1	-----	VSW4
13	16212-ZM7-000	PACKING, INSULATOR	1	-----	VSW4
14	16221-ZG0-801	PACKING, CARBURETOR	1	-----	VSW4
15	95003-05020-31	TUBE, VINYL, 3.5X6.5X200 (95003-05001-60M)	1	-----	VSW4
16	99101-ZG0-0480	JET, MAIN, #48	(1)	-----	VSW4
	99101-ZG0-0500	JET, MAIN, #50	(1)	-----	VSW4
	99101-ZG0-0520	JET, MAIN, #52	1	-----	VSW4
17	99204-ZE2-0350	JET SET, PILOT, #35	1	-----	VSW4



Ref. No.	L.O.N.	(Relative ref. Number) Description	F.R.T.
1	3121B8	ELEMENT, AIR CLEANER .....	0.1
2	3121A5	CASE, AIR CLEANER .....	0.1
3	3121E9	SEAL, AIR CLEANER COVER .....	0.1
4	3121D9	PACKING, AIR CLEANER .....	0.1
9	3121L3	TUBE, AIR CLEANER CASE .....	0.1

Ref. No.	Part No.	Description	Reqd. QTY		Serial No.	Parts catalogue code
			GXH	U		
1	17211-ZM7-000	ELEMENT, AIR CLEANER .....	1			
2	17220-ZM7-000	CASE COMP., AIR CLEANER .....	1			
3	17227-ZM7-000	SEAL, AIR CLEANER .....	1			
4	17228-ZM7-000	PACKING, AIR CLEANER .....	1		----- QC,QHA,QHE,QHM,QU,QXA,SE,SPB,SPB4, SXA,VSW4,WKE4,WK4	
	17228-Z0G-000	.....	1		----- QEB2,QEB4	
5	17230-ZM7-000	COVER COMP., AIR CLEANER .....	1			
6	17231-ZM7-000	COVER, AIR CLEANER .....	1			
7	90004-ZM7-V30	BOLT, FLANGE, 5X80 .....	2		----- QEB2,QEB4	
	90004-ZM7-000	BOLT, FLANGE, 5X75 .....	2		----- QC,QHA,QHE,QHM,QU,QXA,SE,SPB,SPB4, SXA,VSW4,WKE4,WK4	
8	91503-ZM7-000	COLLAR, AIR CLEANER .....	2			
9	95005-70075-30	TUBE, 7X75 (95005-70001-30M) .....	1			

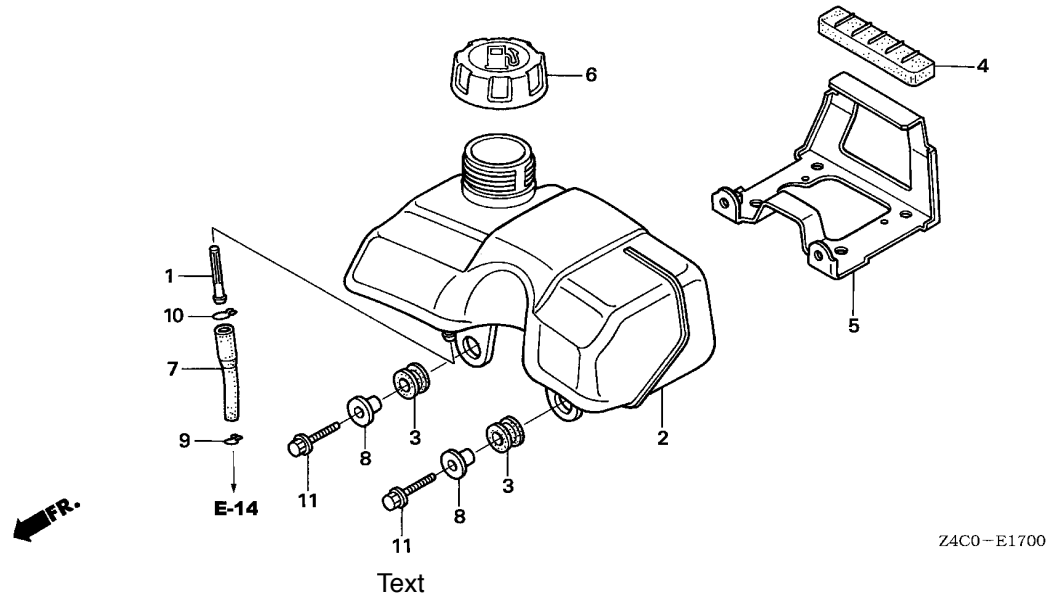




Ref. No.	L.O.N.	(Relative ref. Number) Description	F.R.T.
2		(1)	
2	3131C5	MUFFLER, EXHAUST .....	0.2
3	3131D6	PROTECTOR, EXHAUST MUFFLER ...	0.1
4	3131A1	ARRESTER, SPARK .....	0.2
5	3131B6	GUIDE, AIR EXHAUST .....	0.2

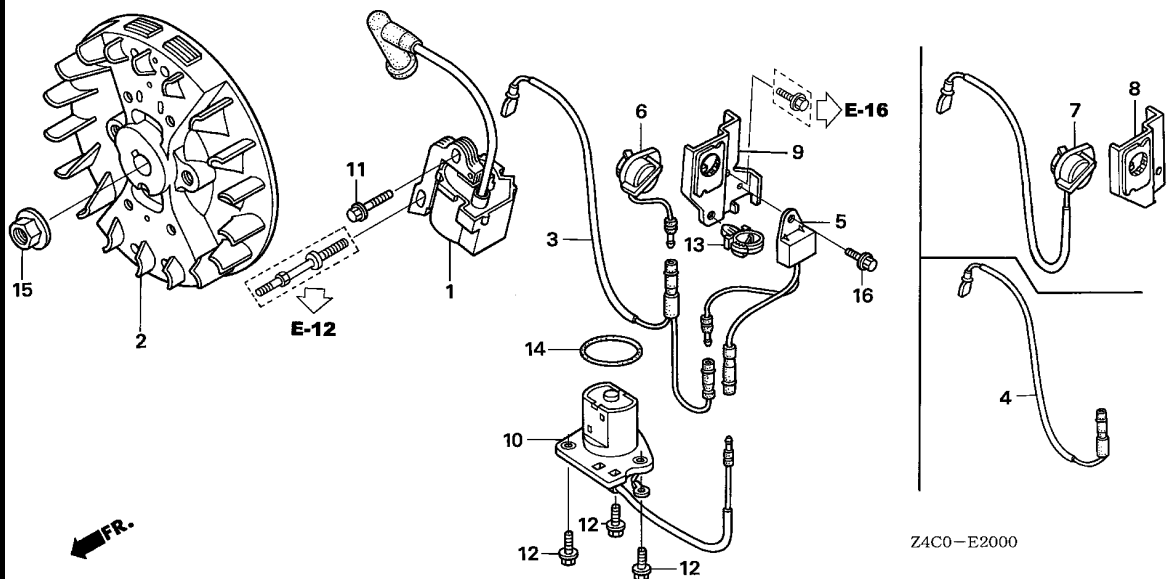
Ref. No.	Part No.	Description	Reqd. QTY	Serial No.	Parts catalogue code
			GXH 50 U		
1	18310-ZM7-V31 18310-ZM7-V41	MUFFLER COMP. ....	1	-----	QEB2,QEB4
2	18310-ZM7-003 18310-ZM7-801	MUFFLER COMP. ....	1	-----	QEB2,QEB4,VSW4
3	18320-ZM7-000	PROTECTOR COMP., MUFFLER ....	1	-----	QC,QHA,QHE,QU,QXA,SE,SPB,SXA,WKE4,WK4
4	18350-ZM7-801	ARRESTER COMP., SPARK .....	1	-----	QHM,SPB4
5	18515-ZM7-000	GUIDE, AIR .....	(1)	-----	QC,QHA,QHE,QU,QXA,SE,SPB,SXA,VSW4,WKE4,WK4
6	90002-ZM7-000	BOLT, STUD, 5X55 .....	1	-----	QC,QEB2,QEB4,QHA,QHE,QU,QXA,SE,SPB,SXA,WKE4,WK4
7	90012-892-000	BOLT, FLANGE, 5X16 .....	1	-----	QC,QEB2,QEB4,QU,QXA,SE,SPB,SPB4,SXA,WKE4,WK4
8	90103-P4V-010	BOLT, FLANGE, 5X35 .....	1	-----	QC,QEB2,QEB4,QHA,QHE,QHM,QU,QXA,SE,SPB,SPB4,SXA,WKE4,WK4
9	90136-SM4-901	NUT, SELF-LOCK, 5MM .....	2	-----	QC,QEB2,QEB4,QHA,QHE,QHM,QU,QXA,SE,SPB,SPB4,SXA,WKE4,WK4
10	91502-ZM3-000	COLLAR, TOP COVER .....	3	-----	QC,QEB2,QEB4,QU,QXA,SE,SPB,SPB4,SXA,WKE4,WK4
11	93903-24110	SCREW, TAPPING, 4X8 .....	1	-----	QHM,SPB4
			(1)	-----	QC,QEB2,QEB4,QHA,QHE,QU,QXA,SE,SPB,SXA,VSW4,WKE4,WK4

2



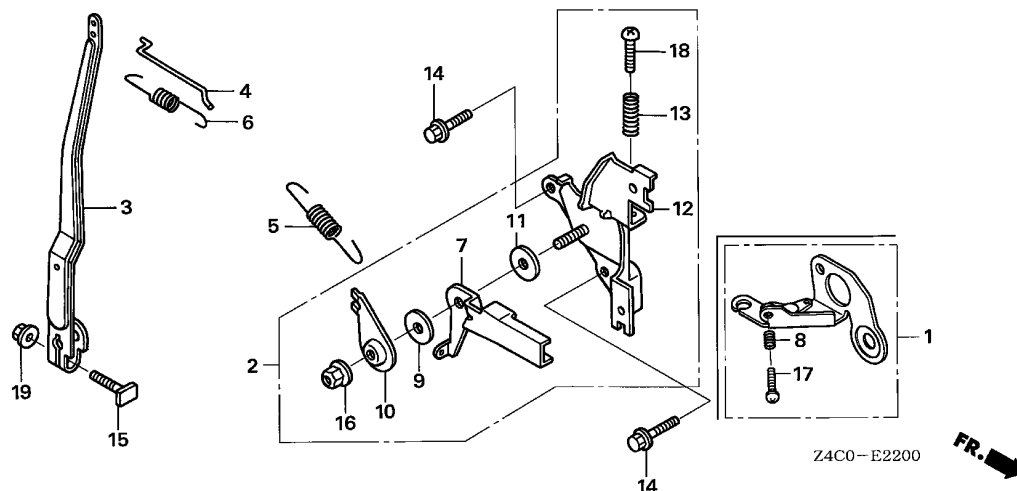
Ref. No.	L.O.N.	(Relative ref. Number) Description	F.R.T.
1	3101H8	STRAINER, FUEL .....	0.1
2	3101H7	TANK, FUEL .....	0.1
3	3101M3	RUBBER A, TANK MOUNTING .....	0.1
.NOTE: Same time for two units			
4	3101M0	RUBBER B, TANK MOUNTING .....	0.1
5	3101E0	STAY, FUEL TANK .....	0.1
7	3101L0	TUBE A, FUEL .....	0.1

Ref. No.	Part No.	Description	Reqd. QTY	Serial No.	Parts catalogue code
			GXH 50 U		
1	16952-ZE6-000	STRAINER, FUEL .....	1	-----	QC,QEB2,QEB4,QU,QXA,SE,SPB,SPB4,SXA,WKE4,WK4
2	17511-ZM7-010	TANK, FUEL .....	1	-----	QC,QEB2,QEB4,QU,QXA,SE,SPB,SPB4,SXA,WKE4,WK4
3	17532-ZM7-000	RUBBER A, TANK MOUNTING .....	2	-----	QC,QEB2,QEB4,QU,QXA,SE,SPB,SPB4,SXA,WKE4,WK4
4	17533-ZM7-000	RUBBER B, TANK MOUNTING .....	1	-----	QC,QEB2,QEB4,QU,QXA,SE,SPB,SPB4,SXA,WKE4,WK4
5	17560-ZM7-000	STAY COMP., FUEL TANK .....	1	-----	QC,QEB2,QEB4,QU,QXA,SE,SPB,SPB4,SXA,WKE4,WK4
6	17620-ZL8-013	CAP ASSY., FUEL TANK .....	1	-----	QC,QEB2,QEB4,QU,QXA,SE,SPB,SPB4,SXA,WKE4,WK4
7	17701-ZM7-000	TUBE A, FUEL .....	1	-----	QC,QEB2,QEB4,QU,QXA,SE,SPB,SPB4,SXA,WKE4,WK4
8	19052-MB4-880	COLLAR, CANISTER MOUNTING .....	2	-----	QC,QEB2,QEB4,QU,QXA,SE,SPB,SPB4,SXA,WKE4,WK4
9	95002-02080	CLIP, TUBE (B8) .....	1	-----	QC,QEB2,QEB4,QU,QXA,SE,SPB,SPB4,SXA,WKE4,WK4
10	95002-02100	CLIP, TUBE (B10) .....	1	-----	QC,QEB2,QEB4,QU,QXA,SE,SPB,SPB4,SXA,WKE4,WK4
11	95701-06020-07	BOLT, FLANGE, 6X20 .....	2	-----	QC,QEB2,QEB4,QU,QXA,SE,SPB,SPB4,SXA,WKE4,WK4



Ref. No.	L.O.N.	(Relative ref. Number) Description	F.R.T.
1	6141A5	COIL, IGNITION(ONE)	0.2
2	2161B5	FLYWHEEL	0.3
3	6111B3	CORD, STOP SWITCH	0.2
5	6151A0	ALERT UNIT, ENGINE OIL	0.1
6	6151D9	SWITCH, ENGINE STOP	0.2
10	6151E8	SWITCH, OIL LEVEL	0.2

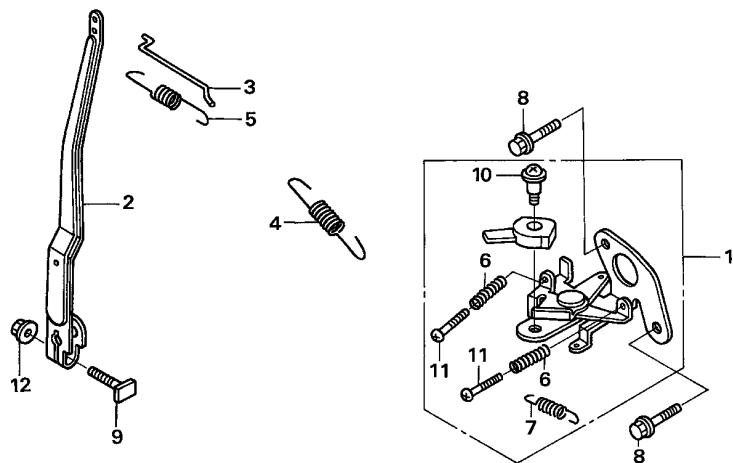
Ref. No.	Part No.	Description	Reqd. QTY	Serial No.	Parts catalogue code
			GXH 50 U		
1	30500-ZM7-004	COIL ASSY., IGNITION	1		
2	31110-ZM7-004	FLYWHEEL COMP.	1		
3	32195-ZM7-800	CORD, STOP SWITCH	1	-----	QHA,QHE,QHM,QXA,SXA,WKE4
4	32195-ZN4-000	CORD, STOP SWITCH	1	-----	SPB,SPB4,VSW4
5	34150-ZH7-003	ALERT UNIT, OIL	1	-----	QXA,SXA,WKE4
6	35120-Z0D-V81	SWITCH ASSY., ENGINE STOP	1	-----	QXA,SXA,WKE4
7	35120-Z4C-003	SWITCH ASSY., ENGINE STOP	1	-----	QC,QEB2,QEB4,QU,SE,WK4
8	35124-ZM7-V30	BRACKET COMP., STOP SWITCH	1	-----	QEB2,QEB4
	35124-ZM7-000		1	-----	QC,QU,SE,WK4
9	35124-ZM7-800	BRACKET COMP., STOP SWITCH	1	-----	QXA,SXA,WKE4
10	35480-ZM7-801	SWITCH ASSY., OIL LEVEL	1	-----	QHA,QHE,QHM,QXA,SXA,VSW4,WKE4
11	90004-ZC3-000	BOLT, FLANGE, 5X20	1		
12	90012-896-750	BOLT, FLANGE, 5X14	3	-----	QHA,QHE,QHM,QXA,SXA,VSW4,WKE4
13	90684-ZA0-601	CLIP, HARNESS	1	-----	QXA,SXA,WKE4
14	91301-ZM7-003	O-RING, 34.6X2.5	1	-----	QHA,QHE,QHM,QXA,SXA,VSW4,WKE4
15	94050-10000	NUT, FLANGE, 10MM	1		
16	95701-06008-00	BOLT, FLANGE, 6X8	1	-----	QXA,SXA,WKE4



Ref. No.	L.O.N.	(Relative ref. Number) Description	F.R.T.
2	1161A5	CONTROL, THROTTLE/GOVERNOR ...	0.1
3	1161A0	ARM, GOVERNOR .....	0.2
4	1161B1	ROD, GOVERNOR .....	0.2
5	1161C5	SPRING, GOVERNOR .....	0.1
6	1161C2	SPRING, THROTTLE RETURN .....	0.2
7	1161A8	LEVER, CONTROL .....	0.2
12	1161A2	BASE, CONTROL .....	0.2

Ref. No.	Part No.	Description	Reqd. QTY	Serial No.	Parts catalogue code
1	16500-ZM7-D10	CONTROL ASSY. ....	1	-----	QEB2,QEB4
2	16500-ZM7-V50	CONTROL ASSY. ....	1	-----	SPB4
	16500-ZM7-000	.....	1	-----	QC,QHA,QHE,QHM,QU,QXA,SE,SPB,SXA,WKE4,WK4
3	16551-ZM7-000	ARM, GOVERNOR .....	1	-----	QC,QEB2,QEB4,QHA,QHE,QHM,QU,QXA,SE,SPB,SPB4,SXA,WKE4,WK4
4	16555-ZM7-000	ROD, GOVERNOR .....	1	-----	QC,QEB2,QEB4,QHA,QHE,QHM,QU,QXA,SE,SPB,SPB4,SXA,WKE4,WK4
5	16561-ZM7-D10	SPRING, GOVERNOR .....	1	-----	QEB2,QEB4
	16561-ZM7-000	.....	1	-----	QC,QU,QXA,SE,SPB,SXA,WKE4,WK4
	16561-ZN4-000	.....	1	-----	QHA,QHE,QHM,SPB4
6	16562-ZM7-000	SPRING, THROTTLE RETURN .....	1	-----	QC,QEB2,QEB4,QHA,QHE,QHM,QU,QXA,SE,SPB,SPB4,SXA,WKE4,WK4
7	16571-ZM7-000	LEVER, CONTROL .....	1	-----	QC,QHA,QHE,QHM,QU,QXA,SE,SPB,SPB4,SXA,WKE4,WK4
8	16571-836-000	SPRING, CONTROL ADJUSTING .....	1	-----	QEB2,QEB4
9	16574-ZE1-000	SPRING, LEVER .....	1	-----	QC,QHA,QHE,QHM,QU,QXA,SE,SPB,SPB4,SXA,WKE4,WK4
10	16575-ZH8-000	WASHER, CONTROL LEVER .....	1	-----	QC,QHA,QHE,QHM,QU,QXA,SE,SPB,SPB4,SXA,WKE4,WK4
11	16578-ZE1-000	SPACER, CONTROL LEVER .....	1	-----	QC,QHA,QHE,QHM,QU,QXA,SE,SPB,SPB4,SXA,WKE4,WK4
12	16580-ZM7-000	BASE COMP., CONTROL .....	1	-----	QC,QHA,QHE,QHM,QU,QXA,SE,SPB,SPB4,SXA,WKE4,WK4
13	16584-ZE3-790	SPRING, CONTROL ADJUSTING .....	1	-----	QC,QHA,QHE,QHM,QU,QXA,SE,SPB,SPB4,SXA,WKE4,WK4
14	90003-892-000	BOLT, FLANGE, 5X12 .....	2	-----	QC,QEB2,QEB4,QHA,QHE,QHM,QU,QXA,SE,SPB,SPB4,SXA,WKE4,WK4
15	90015-ZE5-010	BOLT, GOVERNOR ARM .....	1	-----	QC,QEB2,QEB4,QHA,QHE,QHM,QU,QXA,SE,SPB,SPB4,SXA,WKE4,WK4
16	90114-SA0-000	NUT, SELF-LOCK, 6MM .....	1	-----	QC,QHA,QHE,QHM,QU,QXA,SE,SPB,SPB4,SXA,WKE4,WK4
17	93500-04018-OH	SCREW, PAN, 4X18 .....	1	-----	QEB2,QEB4
18	93500-05020-0A	SCREW, PAN, 5X20 .....	1	-----	QC,QHA,QHE,QHM,QU,QXA,SE,SPB,SXA,WKE4,WK4
	93500-05025-0G	SCREW, PAN, 5X25 .....	1	-----	SPB4
19	94050-06000	NUT, FLANGE, 6MM .....	1	-----	QC,QEB2,QEB4,QHA,QHE,QHM,QU,QXA,SE,SPB,SPB4,SXA,WKE4,WK4

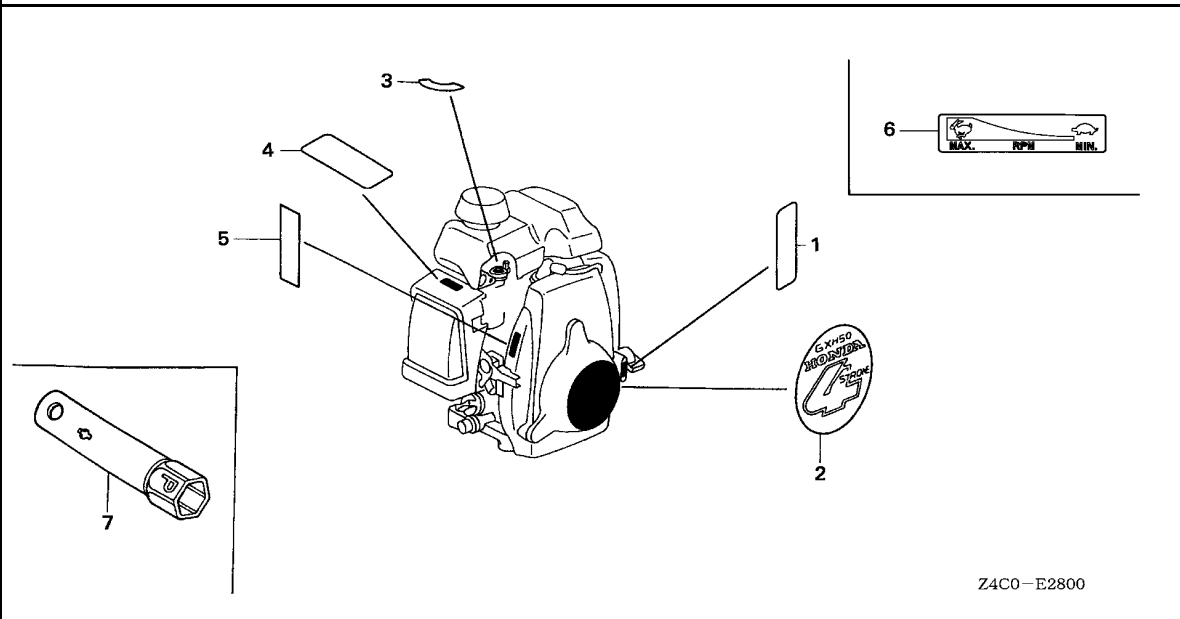




Z4C0-E2201

Ref. No.	L.O.N.	(Relative ref. Number) Description	F.R.T.
1	1161A5	CONTROL, THROTTLE/GOVERNOR ...	0.1
2	1161A0	ARM, GOVERNOR .....	0.2
3	1161B1	ROD, GOVERNOR .....	0.2
4	1161C5	SPRING, GOVERNOR .....	0.1
5	1161C2	SPRING, THROTTLE RETURN .....	0.2

Ref. No.	Part No.	Description	Reqd. QTY	Serial No.	Parts catalogue code
			GXH 50 U		
1	16500-ZM7-U10	CONTROL ASSY. ....	1	-----	VSW4
2	16551-ZM7-000	ARM, GOVERNOR .....	1	-----	VSW4
3	16555-ZM7-000	ROD, GOVERNOR .....	1	-----	VSW4
4	16561-ZM7-U10	SPRING, GOVERNOR .....	1	-----	VSW4
5	16562-ZM7-000	SPRING, THROTTLE RETURN .....	1	-----	VSW4
6	16571-836-000	SPRING, CONTROL ADJUSTING ...	2	-----	VSW4
7	16592-ZG0-000	SPRING, CABLE RETURN .....	1	-----	VSW4
8	90003-892-000	BOLT, FLANGE, 5X12 .....	2	-----	VSW4
9	90015-ZE5-010	BOLT, GOVERNOR ARM .....	1	-----	VSW4
10	90141-KT8-000	SCREW, PAN, 5X19 .....	1	-----	VSW4
11	93500-04020-0H	SCREW, PAN, 4X20 .....	2	-----	VSW4
12	94050-06000	NUT, FLANGE, 6MM .....	1	-----	VSW4



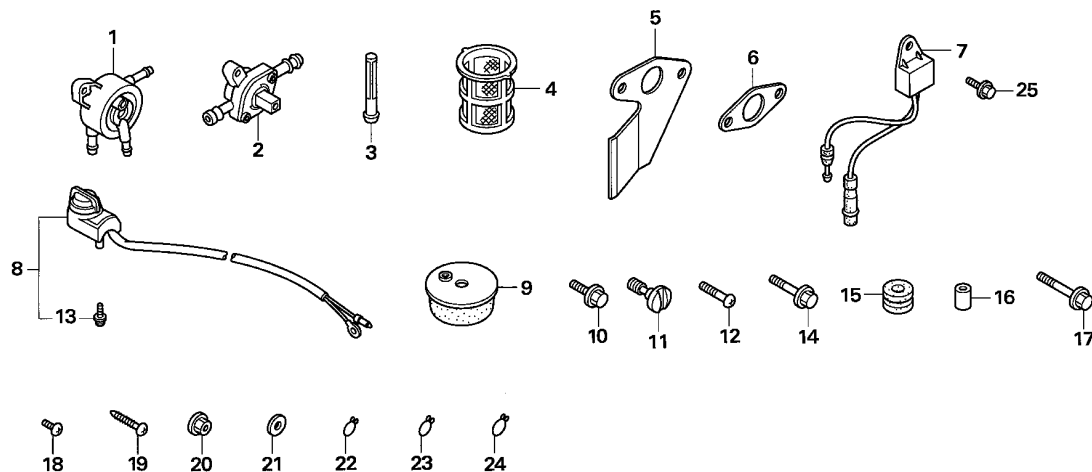
Ref. L.O.N. (Relative ref. Number) F.R.T.  
No. Description

NO INFORMATION .....

Z4C0-E2800

Ref. No.	Part No.	Description	Reqd. QTY	Serial No.	Parts catalogue code
			GXH 50 U		
1	87501-ZM7-V40	MARK, ENGINE SWITCH INDICATION	1	-----	QEB2,QEB4
2	87521-ZM7-010	EMBLEM .....	1	-----	QC,QEB2,QEB4,QHA,QHE,QHM,QU,QXA,SE,SPB,SPB4,SXA,WKE4,WK4
3	87528-ZG0-W40	MARK, COCK (EXTERNAL) .....	1	-----	QC,QEB2,QEB4,QHA,QHE,QHM,QU,QXA,SE,SPB,SPB4,SXA,WKE4,WK4
4	87528-Z0D-000	MARK, CHOKE INDICATION .....	1	-----	QEB2,QEB4
5	87532-ZH7-000	MARK, THROTTLE INDICATION ...	1	-----	QC,QHA,QHE,QHM,QU,SE,SPB,SPB4,SXA,WKE4,WK4
6	87532-ZH7-000	MARK, THROTTLE INDICATION ...	1	-----	QXA
7	89216-130-690	WRENCH, SPARK PLUG .....	1	-----	VSW4
			(1)	-----	QC,QEB2,QEB4,QHA,QHE,QHM,QU,QXA,SE,SPB,SPB4,SXA





Z4C0-E4000

Ref. L.O.N. (Relative ref. Number) F.R.T.  
No. Description

NO INFORMATION .....

Ref. No.	Part No.	Description	Reqd. QTY	Serial No.	Parts catalogue code
1	16700-ZL8-013	PUMP ASSY., FUEL .....	1	-----	VSW4
	16700-ZT3-013	.....	1	-----	QHA,QHE,QHM
2	16950-ZT3-003	COCK ASSY., FUEL .....	1	-----	VSW4
3	16952-ZE6-000	STRAINER, FUEL .....	1	-----	VSW4
4	17670-ZC3-700	FILTER COMP., FUEL .....	1	-----	VSW4
5	18333-ZT3-000	GASKET, EX. PIPE .....	1	-----	VSW4
6	18381-Z0G-000	GASKET, MUFFLER .....	1	-----	VSW4
7	34150-ZH7-003	ALERT UNIT, OIL .....	1	-----	QHA,QHE,QHM
8	35120-746-C21	SWITCH ASSY., ENGINE STOP ..	1	-----	SPB4
9	60407-ZA7-000	RUBBER, BOTTOM .....	4	-----	VSW4
10	90013-883-000	BOLT, FLANGE, 6X12(CT200) ...	1	-----	VSW4
11	90028-ZC3-000	BOLT, AIR CLEANER COVER .....	1	-----	VSW4
12	90105-ZT3-000	SCREW, PAN, 4X19 .....	1	-----	VSW4
13	90105-733-D61	BOLT, 3X12(SEMS) .....	1	-----	SPB4
14	90197-MN5-000	BOLT, FLANGE, 5X20 .....	2	-----	VSW4
15	90852-898-000	RUBBER, CONTROL BOX .....	3	-----	VSW4
16	91552-898-000	COLLAR, CONTROL BOX .....	3	-----	VSW4
17	93404-06025-00	BOLT-WASHER, 6X25 .....	3	-----	VSW4
18	93500-03006-1H	SCREW, PAN, 3X6 .....	1	-----	SPB4
19	93913-25520	SCREW, TAPPING, 5X20(P0) ...	3	-----	VSW4
20	94050-05000	NUT, FLANGE, 5MM .....	2	-----	VSW4
21	94103-06000	WASHER, PLAIN, 6MM .....	2	-----	VSW4
22	95002-02080	CLIP, TUBE (B8) .....	3	-----	VSW4
23	95002-02100	CLIP, TUBE (B10) .....	2	-----	VSW4
24	95002-70000	CLIP, TUBE (C11) .....	1	-----	VSW4
25	95701-06008-00	BOLT, FLANGE, 6X8 .....	1	-----	QHA,QHE,QHM

# PART NO. INDEX

E 1

Part Number	Address	Page	Ref.	Part Number	Address	Page	Ref.	Part Number	Address	Page	Ref.	Part Number	Address	Page	Ref.
11000				16000				16574-ZE1-000 D2 33 9				28404-968-004 C9 24 2			
11300-ZM7-406	C2	17	1	16010-ZG0-015	C11	26	1	16575-ZH8-000	D2	33	10	28410-ZM7-V31	C9	24	3
11300-ZM7-407	C2	17	1	16010-ZM7-003	C11	26	1	16578-ZE1-000	D2	33	11	28414-ZM7-003	C9	24	3
11340-ZM7-020	C3	18	1	16010-ZM7-D01	C13	28	1	16580-ZM7-000	D2	33	12	28421-ZM7-003	C9	24	4
11340-ZM7-802	C3	18	1	16011-ZE0-005	C11	26	2	16584-ZE3-790	D2	33	13	28433-ZM3-003	C9	24	5
11340-ZM7-U10	C3	18	1	16013-ZG0-811	C11	26	3	16592-ZG0-000	D3	34	7	28442-ZL8-003	C9	24	6
11340-ZM7-V30	C3	18	1		C13	28	2	16700-ZL8-013	D5	36	1	28451-ZM7-003	C9	24	7
12000				16015-ZG0-811	C11	26	4	16700-ZT3-013	D5	36	1	28459-ZM7-003	C9	24	8
12100-ZM7-416	C1	16	1	16015-ZM7-003	C11	26	5	16882-ZM7-U10	C1	16	7	28461-ZH8-003	C9	24	9
12100-ZM7-417	C1	16	1		C13	28	3	16950-ZT3-003	D5	36	2	28461-ZM3-003	C9	24	10
12209-ZM7-003	C6	21	1	16016-ZH7-W01	C11	26	6	16952-ZE6-000	C16	31	1	28462-Z0G-003	C9	24	11
12311-ZM7-010	C1	16	2		C13	28	4		D5	36	3	28462-ZM7-003	C9	24	11
12367-ZE6-010	C1	16	3	16024-ZB9-005	C11	26	7	16953-ZG0-812	C11	26	19	30000			
13000				16024-ZE1-811	C11	26	8	16954-ZE1-812	C12	27	20	30500-ZM7-004 D1 32 1			
13010-ZM7-000	C5	20	1	16028-ZG0-811	C11	26	9	16956-ZE1-811	C12	27	21	31000			
13010-ZM7-D00	C5	20	1		C13	28	7	16957-ZE1-812	C12	27	22	31110-ZM7-004 D1 32 2			
13101-ZM7-010	C5	20	2	16044-Z0D-003	C13	28	8	17211-ZM7-000	C14	29	1	32000			
13111-122-000	C5	20	3	16044-ZM7-003	C11	26	10	17220-ZM7-000	C14	29	2	32195-ZM7-800 D1 32 3			
13115-147-000	C5	20	4	16044-ZM7-801	C11	26	10	17227-ZM7-000	C14	29	3	32195-ZM4-000 D1 32 4			
13200-ZM7-000	C5	20	5	16100-ZM7-805	C11	26	11	17228-Z0G-000	C14	29	4	34000			
13200-ZM7-V30	C5	20	5	16100-ZM7-G15	C11	26	11	17228-ZM7-000	C12	27	23	34150-ZH7-003 D1 32 5			
13200-ZM7-V30	C5	20	5	16100-ZM7-U31	C13	28	9	17230-ZM7-000	C14	29	5	35000			
13281-ZM7-000	C5	20	6	16100-ZM7-V31	C11	26	11	17231-ZM7-000	C14	29	6	35120-746-C21 D5 36 8			
13281-ZM7-V30	C5	20	6	16124-ZE0-005	C11	26	12	17231-ZM7-000	C14	29	6	35120-Z0D-V81 D1 32 6			
13310-ZM7-000	C4	19	3	16166-ZM7-003	C11	26	13	17511-ZM7-010	C16	31	2	35120-Z4C-003 D1 32 7			
13310-ZM7-800	C4	19	4	16166-ZN4-801	C11	26	13	17532-ZM7-000	C16	31	3	35124-ZM7-000 D1 32 8			
13310-ZM7-G00	C4	19	1	16166-ZN4-801	C13	28	11	17533-ZM7-000	C16	31	4	35124-ZM7-800 D1 32 9			
13310-ZM7-U11	C4	19	2	16199-ZM7-003	C11	26	14	17560-ZM7-000	C16	31	5	35124-ZM7-V30 D1 32 8			
13310-ZM7-V30	C4	19	4	16211-ZM7-000	C11	26	15	17620-ZL8-013	C16	31	6	35480-ZM7-801 D1 32 10			
13331-ZM7-000	C4	19	5	16212-ZM7-000	C11	26	16	17670-ZC3-700	D5	36	4	60000			
14000				16220-ZM7-V30	C11	26	17	17701-ZM7-000	C16	31	7	60407-ZA7-000 D5 36 9			
14100-Z0G-000	C6	21	2	16221-ZG0-801	C11	26	18	18310-ZM7-003	C15	30	2	87000			
14100-ZM7-010	C6	21	2		C13	28	14	18310-ZM7-801	C15	30	2	87501-ZM7-V40 D4 35 1			
14126-Z0G-003	C6	21	3	16500-ZM7-000	D2	33	2	18310-ZM7-V31	C15	30	1	87521-ZM7-010 D4 35 2			
14410-ZM7-000	C6	21	4	16500-ZM7-D10	D2	33	1	18310-ZM7-V41	C15	30	1	87528-Z0D-000 D4 35 4			
14431-ZM7-000	C6	21	5	16500-ZM7-U10	D3	34	1	18320-ZM7-000	C15	30	3	87528-ZG0-W40 D4 35 3			
14435-ZM7-003	C6	21	6	16500-ZM7-V50	D2	33	2	18333-ZT3-000	D5	36	5	87532-ZH7-000 D4 35 5			
14451-ZM7-000	C6	21	7	16510-ZM7-000	C3	18	2	18350-ZM7-801	C15	30	4	93000			
14711-ZM7-000	C6	21	8	16531-ZM7-000	C3	18	3	18381-Z0G-000	D5	36	6	91202-HC5-003 C2 17 6			
14721-ZM7-000	C6	21	9	16541-ZM7-000	C1	16	6	18515-ZM7-000	C15	30	5	91231-ZC3-003 C1 16 13			
14731-ZM7-013	C6	21	10	16551-ZM7-000	D2	33	3	19000				91301-ZM7-003 D1 32 14			
14732-Z0G-003	C6	21	11		D3	34	2	19052-MB4-880 C16 31 8				91502-ZM3-000 C15 30 10			
14751-ZM7-000	C6	21	12	16555-ZM7-000	D2	33	4	19610-ZM7-000ZC C10 25 1				91503-ZM7-000 C14 29 8			
14754-ZM7-000	C6	21	13		D3	34	3	19610-ZM7-000ZD C10 25 1				91504-ZM7-003 C9 24 13			
14771-ZM3-010	C6	21	14	16561-ZM7-000	D2	33	5	19630-ZM7-U10 C1 16 8				91552-898-000 D5 36 16			
15000				16561-ZM7-D10	D2	33	5	19631-ZM7-000 C1 16 8				93404-06025-00 D5 36 17			
15571-ZM7-003	C1	16	4	16561-ZM7-U10	D3	34	4	28000				93500-03005-0A C1 16 14			
15572-ZM7-000	C1	16	5	16561-ZN4-000	D2	33	5	28400-ZM7-003 C9 24 1				93500-03006-1H C12 27 24			
15600-ZM7-003	C2	17	2	16562-ZM7-000	D2	33	6	28400-ZM7-V31 C9 24 1				93500-04018-0H D2 33 17			
15625-ZE1-003	C2	17	3		D3	34	5	89000				93500-04020-0H D3 34 11			
15000				16571-836-000	D2	33	8	89216-130-690 D4 35 7							
15000				16571-ZM7-000	D2	33	7								

3

# PART NO. INDEX

**E 2**

Part Number	Address	Page	Ref.	Part Number	Address	Page	Ref.	Part Number	Address	Page	Ref.	Part Number	Address	Page	Ref.
93500-05020-0A	D2	33	18												
93500-05025-0G	D2	33	18												
93903-24110	C15	30	11												
93913-25520	D5	36	19												
94000															
94050-05000	C9	24	14												
	D5	36	20												
94050-06000	D2	33	19												
	D3	34	12												
94050-10000	D1	32	15												
94103-06000	D5	36	21												
94251-06000	C1	16	15												
94301-06100	C3	18	8												
95000															
95002-02080	C16	31	9												
	D5	36	22												
95002-02100	C16	31	10												
	D5	36	23												
95002-70000	D5	36	24												
95003-05010-31	C11	26	14												
95003-05020-31	C13	28	15												
95005-70075-30	C14	29	9												
95701-06008-00	D1	32	16												
	D5	36	25												
95701-06020-07	C16	31	11												
95701-08012-08	C2	17	7												
96000															
96100-62030-00	C4	19	7												
96220-60150	C1	16	16												
98000															
98056-54750	C1	16	17												
98056-54757	C1	16	17												
98056-54770	C1	16	17												
98056-54777	C1	16	17												
98056-55757	C1	16	17												
98056-55777	C1	16	17												
99000															
99101-ZG0-0480	C12	27	25												
	C13	28	16												
99101-ZG0-0500	C12	27	25												
	C13	28	16												
99101-ZG0-0520	C12	27	25												
	C13	28	16												
99204-ZE2-0350	C12	27	26												
	C13	28	17												

3

# PART NAME INDEX

F 1

Part name	Address	Page	Ref.	Part name	Address	Page	Ref.	Part name	Address	Page	Ref.
[ A ]				CHAMBER SET, FLOAT .....	C13	28	4	GRIP, STARTER .....	C9	24	9
ALERT UNIT, OIL .....	D1	32	5	CHOKE SET .....	C11	26	10	GUIDE, AIR .....	C15	30	5
	D5	36	7		C13	28	8	GUIDE, ROPE .....	C9	24	5
ARM, GOVERNOR .....	D2	33	3	CLIP, GOVERNOR HOLDER .....	C3	18	6	[ I ]			
	D3	34	2	CLIP, HARNESS .....	D1	32	13	INSULATOR, CARBURETOR .....	C11	26	15
ARM, SWING .....	C9	24	8	CLIP, PISTON PIN, 10MM .....	C5	20	4		C13	28	12
ARM, VALVE ROCKER .....	C6	21	5	CLIP, TUBE .....	C16	31	9	[ J ]			
ARRESTER COMP., SPARK .....	C15	30	4		D5	36	22	JET SET, PILOT, .....	C12	27	26
[ B ]							23		C13	28	17
				COCK ASSY., FUEL .....	D5	36	2	JET, MAIN, .....	C12	27	25
BARREL COMP., CYLINDER .....	C1	16	1	COIL ASSY., IGNITION .....	D1	32	1		C13	28	16
BASE COMP., CONTROL .....	D2	33	12	COLLAR .....	C9	24	13	[ K ]			
BEARING, RADIAL BALL, 6203 ...	C4	19	7	COLLAR, AIR CLEANER .....	C14	29	8	KEY, 4.78MM .....	C4	19	6
BOLT-WASHER, 6X25 .....	D5	36	17	COLLAR, CANISTER MOUNTING .....	C16	31	8	KEY, 5MM .....	C4	19	6
BOLT, 3X12 .....	D5	36	13	COLLAR, CONTROL BOX .....	D5	36	16	KEY, SPECIAL .....	C4	19	5
BOLT, AIR CLEANER COVER .....	D5	36	11	COLLAR, LIFTER .....	C6	21	13	KNOB, RECOIL STARTER .....	C9	24	10
BOLT, CONNECTING ROD .....	C5	20	7	COLLAR, TOP COVER .....	C15	30	10	[ L ]			
BOLT, FLANGE, 5X12 .....	C1	16	10	CONTROL ASSY. ....	D2	33	1	LEVER, COCK .....	C11	26	19
			11				2	LEVER, CONTROL .....	D2	33	7
	D2	33	14		D3	34	1	LIFTER, EX. VALVE .....	C6	21	11
	D3	34	8	CORD, STOP SWITCH .....	D1	32	3	LIFTER, VALVE .....	C6	21	10
BOLT, FLANGE, 5X14 .....	D1	32	12				4	[ M ]			
BOLT, FLANGE, 5X16 .....	C15	30	7	COVER COMP., AIR CLEANER .....	C14	29	5	MARK, CHOKE INDICATION .....	D4	35	4
BOLT, FLANGE, 5X20 .....	D1	32	11	COVER COMP., CRANKCASE SIDE ...	C3	18	1	MARK, COCK .....	D4	35	3
	D5	36	14	COVER COMP., FAN .....	C10	25	1	MARK, ENGINE SWITCH INDICATION	D4	35	1
BOLT, FLANGE, 5X23 .....	C2	17	4	COVER, AIR CLEANER .....	C14	29	6	MARK, THROTTLE INDICATION .....	D4	35	5
	C3	18	4	COVER, HEAD .....	C1	16	2	MUFFLER COMP. ....	C15	30	1
BOLT, FLANGE, 5X35 .....	C15	30	8	CRANKSHAFT COMP. ....	C4	19	1				2
BOLT, FLANGE, 5X75 .....	C14	29	7				2	[ N ]			
BOLT, FLANGE, 5X80 .....	C14	29	7	[ D ]				NOZZLE, MAIN .....	C11	26	13
BOLT, FLANGE, 6X12 .....	D5	36	10				3		C13	28	11
BOLT, FLANGE, 6X20 .....	C16	31	11	DIPPER, CONNECTING ROD .....	C5	20	6	NUT, FLANGE, 10MM .....	D1	32	15
BOLT, FLANGE, 6X8 .....	D1	32	16	DOWEL PIN, 6X10 .....	C3	18	8	NUT, FLANGE, 5MM .....	C9	24	14
	D5	36	25	[ E ]					D5	36	20
BOLT, FLANGE, 8X12 .....	C2	17	7	ELEMENT, AIR CLEANER .....	C14	29	1	NUT, FLANGE, 6MM .....	D2	33	19
BOLT, GOVERNOR ARM .....	D2	33	15	EMBLEM .....	D4	35	2		D3	34	12
	D3	34	9	[ F ]				NUT, SELF-LOCK, 5MM .....	C15	30	9
BOLT, STUD .....	C10	25	2	FILTER COMP., FUEL .....	D5	36	4	NUT, SELF-LOCK, 6MM .....	D2	33	16
			3	FILTER, BREATHER .....	C1	16	3	NUT, TAPPET ADJUSTING .....	C6	21	15
BOLT, STUD, 5X14 .....	C1	16	9	FLOAT SET .....	C11	26	3	[ O ]			
BOLT, STUD, 5X55 .....	C15	30	6	FLYWHEEL COMP. ....	D1	32	2	OIL SEAL, 17X27X5 .....	C2	17	6
BRACKET COMP., STOP SWITCH ...	D1	32	8	[ G ]					C3	18	7
			9	GASKET SET .....	C11	26	1	OIL SEAL, 5X11X5 .....	C1	16	13
[ C ]							2	O-RING, 34.6X2.5 .....	D1	32	14
CAMSHAFT ASSY. ....	C6	21	2	GASKET, EX. PIPE .....	D5	36	5				
CAP ASSY., FUEL TANK .....	C16	31	6	GASKET, MUFFLER .....	D5	36	6				
CAP ASSY., OIL FILLER .....	C2	17	2	GOVERNOR ASSY. ....	C3	18	2				
CARBURETOR ASSY. ....	C11	26	11	[ H ]							
	C13	28	9								
CASE ASSY., OIL .....	C2	17	1								
CASE COMP., AIR CLEANER .....	C14	29	2								
CASE COMP., STARTER .....	C9	24	3								
CASE, RECOIL STARTER .....	C9	24	3								
CHAMBER SET, FLOAT .....	C11	26	4								
			5								

# PART NAME INDEX

F 2

Part name	Address	Page	Ref.	Part name	Address	Page	Ref.	Part name	Address	Page	Ref.
[ P ]				SCREW, TAPPING, 4X8 .....	C15	30	11				
PACKING, 8MM .....	C2	17	5	SCREW, TAPPING, 5X20 .....	D5	36	19				
PACKING, AIR CLEANER .....	C12	27	23	SCREW, THROTTLE STOP .....	C11	26	12				
	C14	29	4		C13	28	10				
PACKING, CARBURETOR .....	C11	26	18	SEAL, AIR CLEANER .....	C14	29	3				
	C13	28	14	SEAL, VALVE STEM .....	C6	21	1				
PACKING, FUEL COCK .....	C12	27	22	SHAFT, GOVERNOR ARM .....	C1	16	6				
PACKING, INSULATOR .....	C11	26	16	SHROUD .....	C1	16	8				
	C13	28	13	SHROUD COMP. ....	C1	16	8				
PACKING, OIL FILLER CAP .....	C2	17	3	SLIDER, GOVERNOR .....	C3	18	3				
PIN, LOCK, 6MM .....	C1	16	15	SPACER, CARBURETOR .....	C11	26	17				
PIN, PISTON, 10X33 .....	C5	20	3	SPACER, CONTROL LEVER .....	D2	33	11				
PISTON .....	C5	20	2	SPRING, CABLE RETURN .....	D3	34	7				
PIVOT, ROCKER ARM .....	C6	21	7	SPRING, COCK LEVER .....	C12	27	21				
PLATE, LEVER SETTING .....	C12	27	20	SPRING, CONTROL ADJUSTING .....	D2	33	8				
PLATE, STOPPER .....	C1	16	5		D3	34	6				
PLUG, SPARK .....	C1	16	17	SPRING, FRICTION .....	C9	24	2				
PROTECTOR COMP., MUFFLER .....	C15	30	3	SPRING, GOVERNOR .....	D2	33	5				
PULLEY, RECOIL STARTER .....	C9	24	7		D3	34	4				
PUMP ASSY., FUEL .....	D5	36	1	SPRING, LEVER .....	D2	33	9				
[ R ]				SPRING, RECOIL STARTER .....	C9	24	6				
REEL, RECOIL STARTER .....	C9	24	4	SPRING, THROTTLE RETURN .....	D2	33	6				
RETAINER, VALVE SPRING .....	C6	21	14		D3	34	5				
RING SET, PISTON .....	C5	20	1	SPRING, VALVE .....	C6	21	12				
ROD ASSY., CONNECTING .....	C5	20	5	STARTER ASSY., RECOIL .....	C9	24	1				
ROD, GOVERNOR .....	D2	33	4	STAY COMP., FUEL TANK .....	C16	31	5				
	D3	34	3	STRAINER, FUEL .....	C16	31	1				
ROD, PUSH .....	C6	21	4		D5	36	3				
ROLLER .....	C6	21	3	SWITCH ASSY., ENGINE STOP .....	D1	32	6				
			6		D5	36	8				
ROLLER, 6X15 .....	C1	16	16	SWITCH ASSY., OIL LEVEL .....	D1	32	10				
ROPE, RECOIL STARTER .....	C9	24	11	[ T ]							
RUBBER A, TANK MOUNTING .....	C16	31	3	TANK, FUEL .....	C16	31	2				
RUBBER B, TANK MOUNTING .....	C16	31	4	TUBE .....	C11	26	14				
RUBBER, BOTTOM .....	D5	36	9	TUBE A, FUEL .....	C16	31	7				
RUBBER, CONTROL BOX .....	D5	36	15	TUBE, 7X75 .....	C14	29	9				
[ S ]				TUBE, DIAPHRAGM .....	C1	16	7				
SCREW SET .....	C11	26	9	TUBE, VINYL, 3.5X6.5X100 .....	C11	26	14				
	C13	28	7	TUBE, VINYL, 3.5X6.5X200 .....	C13	28	15				
SCREW SET, DRAIN .....	C11	26	7	[ V ]							
			8	VALVE SET, FLOAT .....	C11	26	2				
	C13	28	6		C13	28	2				
SCREW SET, PILOT .....	C11	26	6	VALVE, EX. ....	C6	21	9				
	C13	28	5	VALVE, IN. ....	C6	21	8				
SCREW, PAN, 3X5 .....	C1	16	14	VALVE, OIL OUTLET .....	C1	16	4				
SCREW, PAN, 3X6 .....	C12	27	24	[ W ]							
	D5	36	18	WASHER, 4.2X13 .....	C3	18	5				
SCREW, PAN, 4X18 .....	D2	33	17	WASHER, 5.2X9 .....	C1	16	12				
SCREW, PAN, 4X19 .....	D5	36	12	WASHER, CONTROL LEVER .....	D2	33	10				
SCREW, PAN, 4X20 .....	D3	34	11	WASHER, PLAIN, 6MM .....	D5	36	21				
SCREW, PAN, 5X19 .....	D3	34	10	WRENCH, SPARK PLUG .....	D4	35	7				
SCREW, PAN, 5X20 .....	D2	33	18								
SCREW, PAN, 5X25 .....	D2	33	18								
SCREW, SETTING .....	C9	24	12								



---

**1**

**FOREWORD INDEX**

---

**2**

**ENGINE GROUP**

---

**3**

**PART NUMBER INDEX**

---

**4**

**PART NAME INDEX**

---

**HONDA**  
The Power of Dreams



# PARTS CATALOGUE NEWS

Honda Motor Co., Ltd. Service Division

## PARTS CATALOGUE - CORRECTED

Printed in Japan

CODE NO.	BOOKLET TYPE	13Z4C601
	MICRO-FICHE	13Z4C6EA/FA
PARTS CATALOGUE TITLE	GXH50U	
NEWS NO.	001	

Block No.	Ref. No.	Note	Part No.	Description	Reqd. QTY	Serial No.		Parts catalogue code
					GXH 50 U			
E-14	6		16016-ZH7-W01	SCREW SET, PILOT .....	1	-----	-----	QEB2, QEB4
				(CARBURETOR NO.)	1	-----	BF32C E	SE, SPB, SPB4, SXA
				(CARBURETOR NO.)	1	-----	BF32E E	QC, QHA, QHE, QHM, QU, QXA, WKE4, WK4
			A	16016-ZH8-W01	SCREW SET	1	-----	BF32C F
			(CARBURETOR NO.)	1	-----	BF32E F	QC, QHA, QHE, QHM, QU, QXA, WKE4, WK4	

NOTE A:PART NO. CHANGE D:NEWLY PROVIDED E:PART NO. DELETION K:REQUIRED NO. CORRECTION L:APPLICATION SERIAL NO. CORRECTION  
T:APPLICATION CORRECTION Z:REMARKS CHANGE



# PARTS CATALOGUE NEWS

Honda Motor Co., Ltd. Service Division

Printed in Japan

February 27, 2006

CODE NO.	BOOKLET TYPE	13Z4C601
	MICRO- FICHE	13Z4C6EA/FA
PARTS CATALOGUE TITLE	GXH50U	
NEWS NO.	002	

## GXH50U-QXB4 TYPE sales parts information

NOTE: This Parts Catalogue News explains only the parts of the different model that are produced to conform to addition of the GXH50U-QXB4 type.

As for the parts not listed on this Parts Catalogue News, use the parts of the GXH50U-QEB4 type.

### •Models, parts catalogue codes and applicable serial numbers

Model	Type		Parts catalogue type	Applicable engine serial No.	Applicable carburetor identification No.
GXH50U	QEB4	Base model	QEB4	GCAFK-1000001~	BF32G A
	QXB4	Additional model	QXB4		

NOTE A:PART NO. CHANGE D:NEWLY PROVIDED E:PART NO. DELETION K:REQUIRED NO. CORRECTION L:APPLICATION SERIAL NO. CORRECTION  
T:APPLICATION CORRECTION Z:REMARKS CHANGE

•Features of each type		Base type	Additional type
		GXH50U	
Specifications		QEB4	QXB4
Crankshaft	15mm Ø Straight		
	15.8mm Ø Straight	●	●
	M16 Stepped thread		
	17mm Ø Tapered		
Spark arrester		(●)	(●)
Fuel tank		●	●
Oil level switch			●
Engine stop switch		●	●
Oil alert			●

Block No.	Ref. No.	Part No.	Description	Reqd. QTY	Base Part No.	Parts catalogue code
				GXH 50 U		
E-3-10	1	11300-ZM7-407	CASE ASSY., OIL .....	1	11300-ZM7-406	
E-7	6	90741-959-000	KEY, 5MM .....	(1)	90741-ZM7-000	

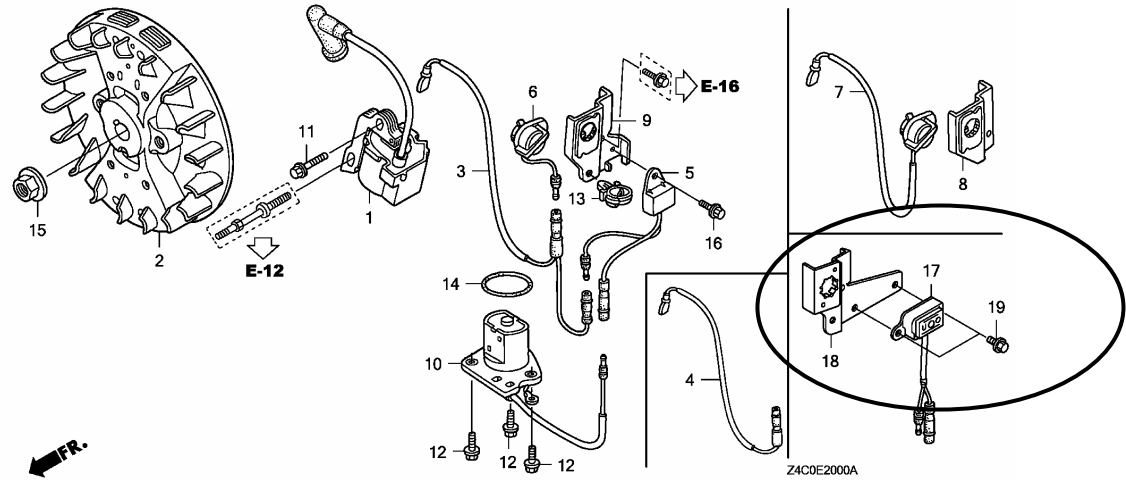
NOTE A:PART NO. CHANGE D:NEWLY PROVIDED E:PART NO.DELETION K:REQUIRED NO. CORRECTION L:APPLICATION SERIAL NO. CORRECTION  
T:APPLICATION CORRECTION Z:REMARKS CHANGE

BOOKNo. : 13Z4C601

Block No.	Ref. No.	Part No.	Description	Reqd. QTY GXH 50 U	Base Part No.	Parts catalogue code
-----------	----------	----------	-------------	-----------------------------	---------------	----------------------

**E-20 FLYWHEEL/IGNITION COIL**

Ref. No.	(Relative ref. Number) LON Service item	F. R. T.
5	(17) 6151A0 ALERT UNIT, ENGINE OIL .....	0.1



E-20	3	32195-ZM7-800	CORD, STOP SWITCH .....	1		
	6	35120-Z0D-V81	SWITCH ASSY., ENGINE STOP ....	1		
	7		SWITCH ASSY., ENGINE STOP ....	0	35120-Z4C-003	
	8		BRACKET COMP., STOP SWITCH ...	0	35124-ZM7-V30	
	10	35480-ZM7-801	SWITCH ASSY., OIL LEVEL .....	1		
	12	90012-896-750	BOLT, FLANGE, 5X14 .....	3		
	13	90684-ZA0-601	CLIP, HARNESS .....	1		
	14	91301-ZM7-003	O-RING, 34.6X2.5 .....	1		
	17	34150-Z4E-S11	ALERT UNIT, OIL (START) .....	1		
	18	35124-Z4C-V80	BRACKET COMP., STOP SWITCH ...	1		
	19	90002-MC7-000	BOLT, FLANGE, 5X8 .....	2		

NOTE A:PART NO. CHANGE D:NEWLY PROVIDED E:PART NO.DELETION K:REQUIRED NO. CORRECTION L:APPLICATION SERIAL NO. CORRECTION  
T:APPLICATION CORRECTION Z:REMARKS CHANGE



# PARTS CATALOGUE NEWS

Honda Motor Co., Ltd. Service Division

## PARTS CATALOGUE - CORRECTED

Printed in Japan

CODE NO.	BOOKLET TYPE	13Z4C601
	MICRO-FICHE	13Z4C6EA/FA
PARTS CATALOGUE TITLE	GXH50U	
NEWS NO.	003	

Block No.	Ref. No.	Note	Part No.	Description	Reqd. QTY	Serial No.	Parts catalogue code
					GXH 50 U		
E-14	11		16100-ZM7-G15	CARBURETOR ASSY. (BF32E E) ...	1	----- 1012911	QC, QHA, QHE, QHM, QU, QXA, WKE4, WK4
			16100-ZM7-805	CARBURETOR ASSY. (BF32C E) ...	1	----- 1013147	SE, SPB, SPB4, SXA
			A 16100-ZM7-G16	CARBURETOR ASSY. (BF32E F) ...	1	1012912 -----	QC, QHA, QHE, QHM, QU, QXA, WKE4, WK4
			A 16100-ZM7-806	CARBURETOR ASSY. (BF32C F) ...	1	1013148 -----	SE, SPB, SPB4, SXA

NOTE A:PART NO. CHANGE D:NEWLY PROVIDED E:PART NO.DELETION K:REQUIRED NO. CORRECTION L:APPLICATION SERIAL NO. CORRECTION  
T:APPLICATION CORRECTION Z:REMARKS CHANGE



# PARTS CATALOGUE NEWS

Honda Motor Co., Ltd. Service Division

## PARTS CATALOGUE - CORRECTED

Printed in Japan

CODE NO.	BOOKLET TYPE	13Z4C601
	MICRO-FICHE	13Z4C6EA/FA
PARTS CATALOGUE NEWS	GXH50U	
NEWS NO.	004	

Block No.	Ref. No.	Note	Part No.	Description	Reqd. QTY		Serial No.	Parts catalogue code
					GXH	50U		
E-14-1	8	L	16044-Z0D-003	CHOKE SET (CARBURETOR NO.)	1		----- BF31H A VSW4	
		D	16044-ZM7-801	..... (CARBURETOR NO.)	1		BF31H B ----- VSW4	
	9	Z	16100-ZM7-U31	CARBURETOR ASSY. (BF31H A/B)	1		----- ----- VSW4	
E-17	2		17511-ZM7-010	TANK, FUEL .....	1		----- 1038814 QC, QEB2, QEB4, QU, QXA, QXB4, SE, SPB, SPB4, SXA, WKE4, WK4	
		A	17511-Z4C-000	.....	1		1038815 ----- QC, QEB2, QEB4, QU, QXA, QXB4, SE, SPB, SPB4, SXA, WKE4, WK4	

**PARTS NAME CORRECTED**

NOTE A:PART NO. CHANGE D:NEWLY PROVIDED E:PART NO. DELETION K:REQUIRED NO. CORRECTION L:APPLICATION SERIAL NO. CORRECTION  
T:APPLICATION CORRECTION Z:REMARKS CHANGE



# PARTS CATALOGUE NEWS

Honda Motor Co., Ltd. Service Division

## PARTS CATALOGUE - CORRECTED

Printed in Japan

CODE NO.	BOOKLET TYPE	13Z4C601
	MICRO- FICHE	13Z4C6EA/FA
PARTS CATALOGUE NEWS	GXH50U	
NEWS NO.	005	

Block No.	Ref. No.	Note	Part No.	Description	Reqd. QTY		Serial No.	Parts catalogue code
					GXH 50 U			
E-40	7		34150-ZH7-003	ALERT UNIT, OIL .....	1	-----	1050750	QHA, QHE, QHM
		A	34150-ZH7-013	.....	1	-----	1050751	QHA, QHE, QHM

NOTE A:PART NO. CHANGE D:NEWLY PROVIDED E:PART NO.DELETION K:REQUIRED NO. CORRECTION L:APPLICATION SERIAL NO. CORRECTION  
T:APPLICATION CORRECTION Z:REMARKS CHANGE



# PARTS CATALOGUE NEWS

Honda Motor Co., Ltd. Service Division

## PARTS CATALOGUE - CORRECTED

Printed in Japan

CODE NO.	BOOKLET TYPE	13Z4C601
	MICRO-FICHE	13Z4C6EA/FA
PARTS CATALOGUE NEWS	GXH50U	
NEWS NO.	006	

Block No.	Ref. No.	Note	Part No.	Description	Reqd. QTY		Serial No.	Parts catalogue code
					GXH	50U		
E-8	2		13101-ZM7-010	PISTON (STD.) .....	1		-----	QC, QEB2, QEB4, QHA, QHE, QHM, QU, QXA, QXB4, SE, SPB, SPB4, SXA, WKE4 WK4
					1		-----	1049099 VSW4
	A		13101-ZM7-800	PISTON .....	1		-----	1049100 VSW4

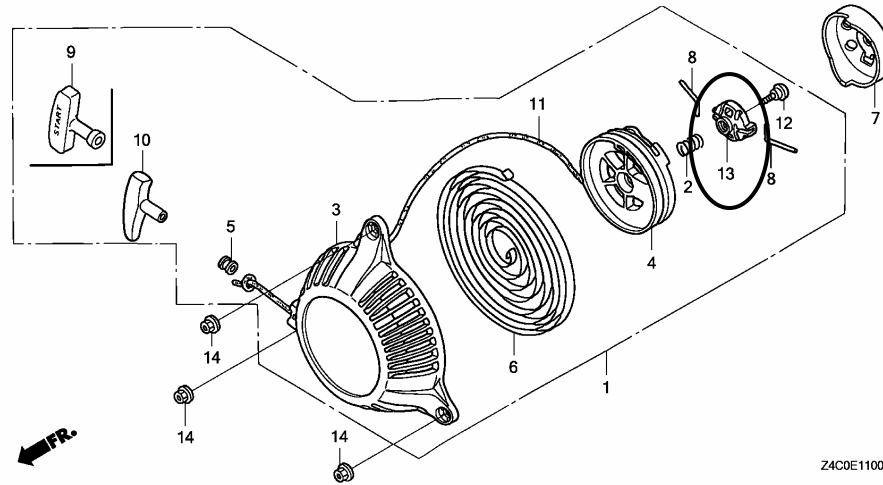
NOTE A:PART NO. CHANGE D:NEWLY PROVIDED E:PART NO.DELETION K:REQUIRED NO. CORRECTION L:APPLICATION SERIAL NO. CORRECTION  
T:APPLICATION CORRECTION Z:REMARKS CHANGE

BOOKNo. : 13Z4C601

Block No.	Ref. No.	Note	Part No.	Description	Reqd. QTY	Serial No.	Parts catalogue code
					GXH 50 U		

E-11 RECOIL STARTER

ILLUSTRATION CORRECTED



E-20	5		34150-ZH7-003	ALERT UNIT, OIL .....	1	----- 1049314	QXA, SXA, WKE4
		A	34150-ZH7-013	.....	1	1049315 -----	QXA, SXA, WKE4

NOTE A:PART NO. CHANGE D:NEWLY PROVIDED E:PART NO.DELETION K:REQUIRED NO. CORRECTION L:APPLICATION SERIAL NO. CORRECTION  
T:APPLICATION CORRECTION Z:REMARKS CHANGE

July 22, 2007



# PARTS CATALOGUE NEWS

Honda Motor Co., Ltd. Service Division

## PARTS CATALOGUE - CORRECTED

Printed in Japan

CODE NO.	BOOKLET TYPE	13Z4C601
	MICRO-FICHE	13Z4C6EA/FA
PARTS CATALOGUE NEWS	GXH50U	
NEWS NO.	007	

Block No.	Ref. No.	Note	Part No.	Description	Reqd. QTY	Serial No.	Parts catalogue code
					GXH 50 U		
E-20	1		30500-ZM7-004	COIL ASSY., IGNITION .....	1	----- 1048869	
	A		30500-ZM7-014	.....	1	1048870	
	10		35480-ZM7-801	SWITCH ASSY., OIL LEVEL .....	1	-----	SXA
					1	----- 1054973	QHA, QHE, QHM, QXA, QXB4, VSW4, WKE4
	A		35480-ZM7-802	.....	1	1054974 -----	QHA, QHE, QHM, QXA, QXB4, VSW4, WKE4

NOTE A:PART NO. CHANGE D:NEWLY PROVIDED E:PART NO.DELETION K:REQUIRED NO. CORRECTION L:APPLICATION SERIAL NO. CORRECTION  
T:APPLICATION CORRECTION Z:REMARKS CHANGE



# PARTS CATALOGUE NEWS

Honda Motor Co., Ltd. Service Division

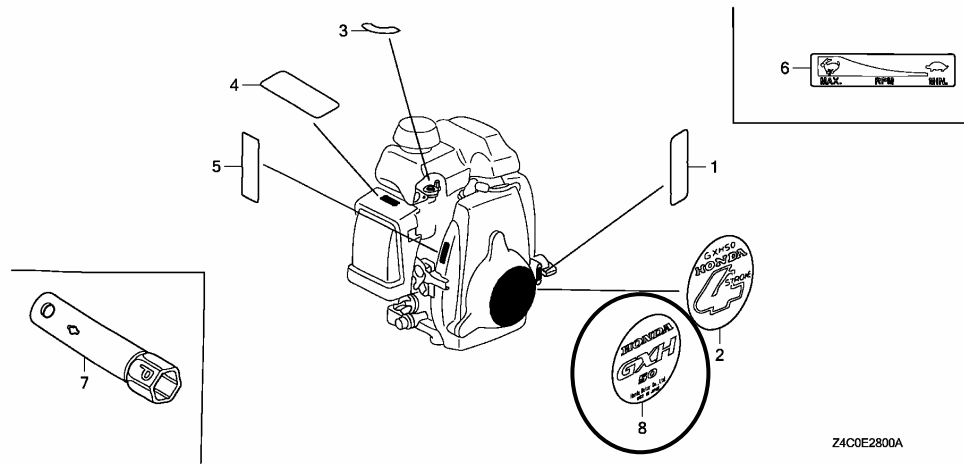
## PARTS CATALOGUE - CORRECTED

Printed in Japan

CODE NO.	BOOKLET TYPE	13Z4C601
	MICRO-FICHE	13Z4C6EA/FA
PARTS CATALOGUE NEWS	GXH50U	
NEWS NO.	008	

Block No.	Ref. No.	Note	Part No.	Description	Reqd. QTY	Serial No.	Parts catalogue code
					GXH 50 U		

E-28 LABEL/TOOL



Z4C0E2800A

NOTE A:PART NO. CHANGE D:NEWLY PROVIDED E:PART NO.DELETION K:REQUIRED NO. CORRECTION L:APPLICATION SERIAL NO. CORRECTION  
T:APPLICATION CORRECTION Z:REMARKS CHANGE

PARTS CATALOGUE NEWS

BOOKNo. : 13Z4C601

Block No.	Ref. No.	Note	Part No.	Description	Reqd. QTY		Serial No.	Parts catalogue code
					GXH 50 U			
E-28	2	L	87521-ZM7-010	EMBLEM (4STROKE) .....	1		----- 1054773	QC, QEB2, QEB4, QHA, QHE, QHM, QU, QXA, QXB4, SE, SPB, SPB4, SXA, WKE4 WK4
	8	D	87521-ZM7-020	EMBLEM (GXH50) .....	1		1054774 -----	QC, QEB2, QEB4, QHA, QHE, QHM, QU, QXA, QXB4, SE, SPB, SPB4, SXA, WKE4 WK4

NOTE A:PART NO. CHANGE D:NEWLY PROVIDED E:PART NO.DELETION K:REQUIRED NO. CORRECTION L:APPLICATION SERIAL NO. CORRECTION  
T:APPLICATION CORRECTION Z:REMARKS CHANGE



# PARTS CATALOGUE NEWS

Honda Motor Co., Ltd. Service Division

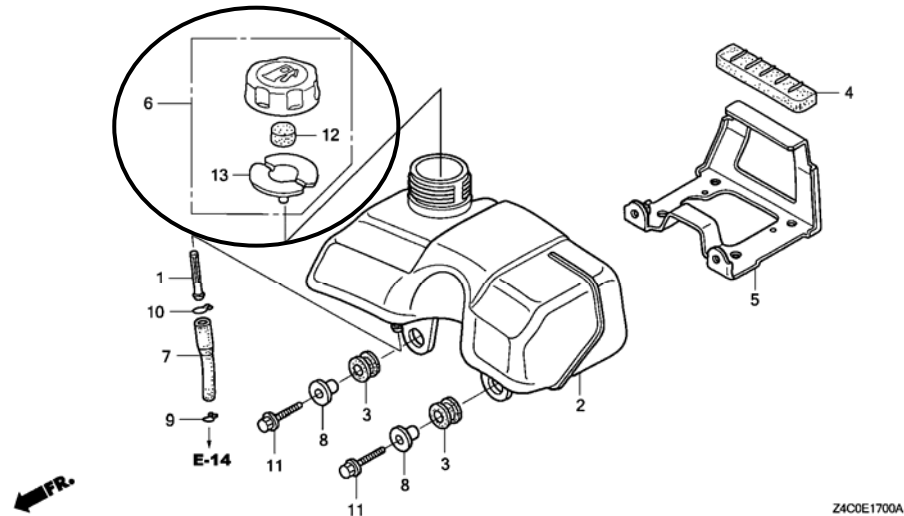
## PARTS CATALOGUE - CORRECTED

Printed in Japan

CODE NO.	BOOKLET TYPE	13Z4C601
	MICRO-FICHE	13Z4C6EA/FA
PARTS CATALOGUE NEWS	GXH50U	
NEWS NO.	009	

Block No.	Ref. No.	Note	Part No.	Description	Reqd. QTY GXH 50 U	Serial No.	Parts catalogue code
-----------	----------	------	----------	-------------	-----------------------------	------------	----------------------

E-17 FUEL TANK



E-17	12	D	17622-ZL8-003	SPONGE, FUEL CAP BREATHER . . . .	1	-----	QC, QEB2, QEB4, QU, QXA, QXB4, SE, SPB, SPB4, SXA, WKE4, WK4
------	----	---	---------------	-----------------------------------	---	-------	--

NOTE A:PART NO. CHANGE D:NEWLY PROVIDED E:PART NO.DELETION K:REQUIRED NO. CORRECTION L:APPLICATION SERIAL NO. CORRECTION  
T:APPLICATION CORRECTION Z:REMARKS CHANGE

PARTS CATALOGUE NEWS

BOOKNo. : 13Z4C601

Block No.	Ref. No.	Note	Part No.	Description	Reqd. QTY	Serial No.	Parts catalogue code
	13	D	17624-ZL8-003	PACKING, FUEL CAP .....	1	-----	QC, QEB2, QEB4, QU, QXA, QXB4, SE, SPB, SPB4, SXA, WKE4, WK4

NOTE A:PART NO. CHANGE D:NEWLY PROVIDED E:PART NO.DELETION K:REQUIRED NO. CORRECTION L:APPLICATION SERIAL NO. CORRECTION  
 T:APPLICATION CORRECTION Z:REMARKS CHANGE



## PARTS CATALOGUE NEWS

Honda Motor Co., Ltd. Service Division

Printed in Japan

CODE NO.	BOOKLET TYPE	13Z4C601
	MICRO- FICHE	13Z4C6EA/FA
PARTS CATALOGUE NEWS	GXH50U	
NEWS NO.	010	

### GXH50U-QXH TYPE sales parts information

NOTE: This Parts Catalogue News explains only the parts of the different model that are produced to conform to addition of the GXH50U-QXH type.

As for the parts not listed on this Parts Catalogue News, use the parts of the GXH50U-QXA type.

#### •Models, parts catalogue codes and applicable serial numbers

Model	Type		Parts catalogue type	Applicable engine serial No.	Applicable carburetor identification No.
GXH50U	QXA	Base type	QXA	GCAFK-1000001~	BF32E E / F
	QXH	Additional type	QXH		BF32E F

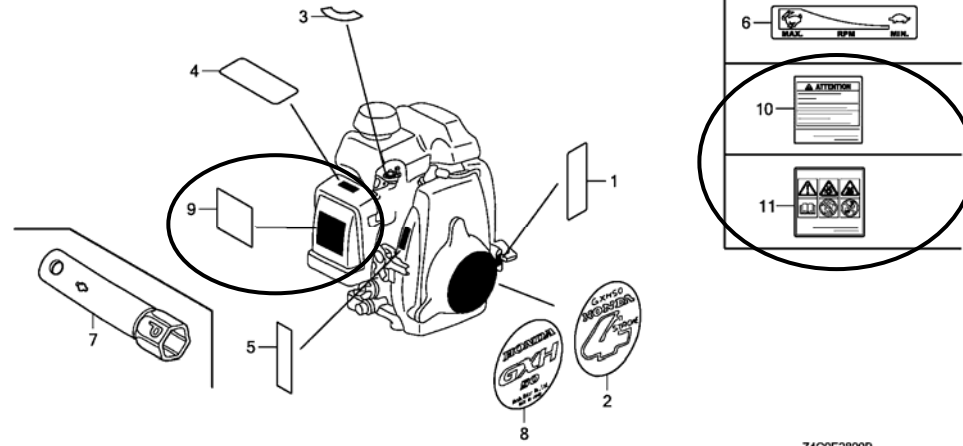
•Features of each type		Base type	Additional type
		GXH50U	
Specifications		QXA	QXH
Crankshaft	15mm Ø Straight		
	15.8mm Ø Straight	●	●
	M10 Stepped thread		
	17mm Ø Tapered		
Spark arrester		(●)	(●)
Fuel tank		●	●
Oil level switch		●	●
Engine stop switch		●	●
Oil alert		●	●

PARTS CATALOGUE NEWS

BOOKNo. : 13Z4C601

Block No.	Ref. No.	Part No.	Description	Reqd. QTY	Base Part No.	Parts catalogue code
E-9	2	14100-ZM7-D70	CAMSHAFT ASSY.	1	14100-ZM7-010	

E-28 LABEL/TOOL



Z4C0E2800B

E-28	9	87516-Z4C-000	MARK, OPERATOR CAUTION (ENGLISH)	1		
	10	87516-Z4C-800	MARK, OPERATOR CAUTION (FRENCH)	1		
	11	87519-Z4C-000	MARK, OPERATOR CAUTION (PICTOGRAPH)	1		



# PARTS CATALOGUE NEWS

Honda Motor Co., Ltd. Service Division

## PARTS CATALOGUE - CORRECTED

Printed in Japan

CODE NO.	BOOKLET TYPE	13Z4C601
	MICRO-FICHE	13Z4C6EA/FA
PARTS CATALOGUE NEWS	GXH50U	
NEWS NO.	011	

Block No.	Ref. No.	Note	Part No.	Description	Reqd. QTY GXH 50 U	Serial No.	Parts catalogue code
-----------	----------	------	----------	-------------	-----------------------------	------------	----------------------

### TABLE OF FEATURES CORRECTED

Specifications		Model	GXH50U														
		Type	QC	QEB2	QEB4	QHA	QHE	QHM	QU	QXA	QXH	SE	SPB	SPB4	SXA	VSW4	WKE4
Crankshaft	15mm Ø Straight										●	●	●	●			
	15.8mm Ø Straight	●	●	●	●	●	●	●	●	●							
	M10 Stepped thread															●	●
	17mm Ø Tapered														●		
Spark arrester		(●)	(●)	(●)	(●)	(●)	●	(●)	(●)	(●)	(●)	(●)	●	(●)	(●)	(●)	(●)
Fuel tank		●	●	●				●	●	●	●	●	●	●		●	●
Oil level switch					●	●	●		●	●				●	●	●	
Engine stop switch		●	●	●				●	●	●	●		●	●		●	●
Oil alert					●	●	●		●	●				●		●	

NOTE A:PART NO. CHANGE D:NEWLY PROVIDED E:PART NO. DELETION K:REQUIRED NO. CORRECTION L:APPLICATION SERIAL NO. CORRECTION  
T:APPLICATION CORRECTION Z:REMARKS CHANGE



# PARTS CATALOGUE NEWS

Honda Motor Co., Ltd. Service Division

Printed in Japan

CODE NO.	BOOKLET TYPE	13Z4C601
	MICRO- FICHE	13Z4C6EA/FA
PARTS CATALOGUE NEWS	GXH50U	
NEWS NO.	012	

## GXH50U-QXA4 TYPE sales parts information

NOTE: This Parts Catalogue News explains only the parts of the different model that are produced to conform to addition of the GXH50U-QXA4 type.

As for the parts not listed on this Parts Catalogue News, use the parts of the GXH50U-QXA type.

### •Models, parts catalogue codes and applicable serial numbers

Model	Type		Parts catalogue type	Applicable engine serial No.	Applicable carburetor identification No.
GXH50U	QXA	Base type	QXA	GCAFK-1000001~	BF32E E / F
	QXA4	Additional type	QXA4		BF32E F

•Features of each type		Base type	Additional type
		GXH50U	
Specifications		QXA	QXA4
Crankshaft	15mm Ø Straight		
	15.8mm Ø Straight	●	●
	M10 Stepped thread		
	17mm Ø Tapered		
Spark arrester		(●)	(●)
Fuel tank		●	●
Oil level switch		●	●
Engine stop switch		●	●
Oil alert		●	●

## PARTS CATALOGUE NEWS

BOOKNo. : 13Z4C601

Block No.	Ref. No.	Part No.	Description	Reqd. QTY GXH 50 U	Base Part No.	Parts catalogue code
E-15	5	17230-ZM7-010	COVER COMP., AIR CLEANER .....	1	17230-ZM7-000	
	6	17231-ZM7-010	COVER, AIR CLEANER .....	1	17231-ZM7-000	
E-28	9	87519-Z4C-000	MARK, OPERATOR CAUTION (PICTOGRAPH)	1		
	10	87516-Z4C-000	MARK, OPERATOR CAUTION (ENGLISH)	1		
		87516-Z4C-800	MARK, OPERATOR CAUTION (FRENCH)	1		



# PARTS CATALOGUE NEWS

Honda Motor Co., Ltd. Service Division

## PARTS CATALOGUE - CORRECTED

Printed in Japan

CODE NO.	BOOKLET TYPE	13Z4C601
	MICRO- FICHE	13Z4C6EA/FA
PARTS CATALOGUE NEWS	GXH50U	
NEWS NO.	013	

Block No.	Ref. No.	Note	Part No.	Description	Reqd. QTY	Serial No.	Parts catalogue code
					GXH 50 U		
E-28	9	T	87516-Z4C-000	MARK, OPERATOR CAUTION (ENGLISH)	1	-----	QXH
					1	1092753	-----
	10	T	87516-Z4C-000	MARK, OPERATOR CAUTION (ENGLISH)	1	-----	QXA4
					1	1092753	-----
	T	87516-Z4C-800	MARK, OPERATOR CAUTION (FRENCH)	1	-----	-----	QXA4, QXH
				1	1092753	-----	QC, QEB2, QEB4, QHA, QHE, QHM, QU, QXA, QXB4, SE, SPB4, VSW4, WKE4, WK4

NOTE A:PART NO. CHANGE D:NEWLY PROVIDED E:PART NO.DELETION K:REQUIRED NO. CORRECTION L:APPLICATION SERIAL NO. CORRECTION  
T:APPLICATION CORRECTION Z:REMARKS CHANGE



# PARTS CATALOGUE NEWS

Honda Motor Co., Ltd. Service Division

## PARTS CATALOGUE - CORRECTED

Printed in Japan

CODE NO.	BOOKLET TYPE	13Z4C601
	MICRO-FICHE	13Z4C6EA/FA
PARTS CATALOGUE NEWS	GXH50U	
NEWS NO.	014	

Block No.	Ref. No.	Note	Part No.	Description	Reqd. QTY		Serial No.	Parts catalogue code
					GXH	U		
E-28	9	T	87519-Z4C-000	MARK, OPERATOR CAUTION (PICTOGRAPH)	1		-----	QXA4
					1		1093387	QEB2, QEB4, QHA, QHE, QHM, QXB4, SE, SPB4, VSW4, WKE4, WK4
	11	T	87519-Z4C-000	MARK, OPERATOR CAUTION (PICTOGRAPH)	1		-----	QXH
					1		1093387	QC, QU, QXA

NOTE A:PART NO. CHANGE D:NEWLY PROVIDED E:PART NO.DELETION K:REQUIRED NO. CORRECTION L:APPLICATION SERIAL NO. CORRECTION  
T:APPLICATION CORRECTION Z:REMARKS CHANGE



# PARTS CATALOGUE NEWS

Honda Motor Co., Ltd. Service Division

CODE NO.	BOOKLET TYPE	13Z4C601
	MICRO-FICHE	13Z4C6EA/FA
PARTS CATALOGUE NEWS	GXH50U	
NEWS NO.	015	

Printed in Japan

## GXH50U-QEBU,WKE2 AND WK2 TYPES sales parts information

NOTE: This Parts Catalogue News explains only the parts of the different model that are produced to conform to addition of the GXH50U-QEBU,WKE2 and WK2 types.

As for the parts not listed on this Parts Catalogue News, use the parts of the GXH50U-QEB2,WKE4 and WK4 types.

**•Models, parts catalogue codes and applicable serial numbers**

Model	Type		Parts catalogue type	Applicable engine serial No.	Applicable carburetor identification No.
GXH50U	QEB2	Base type	QEB2	GCAFK-1000001~	BF32G A
	QEBU	Additional type	QEBU		BF32E E / F
	WKE4	Base type	WKE4		BF32E F
	WKE2	Additional type	WKE2		BF32E E / F
	WK4	Base type	WK4		BF32E F
	WK2	Additional type	WK2		

BOOKNo. : 13Z4C601

•Features of each type		Base type	Additional type	Base type	Additional type	Base type	Additional type
		GXH50U					
Specifications		QEB2	QEBU	WKE4	WKE2	WK4	WK2
Crankshaft	15mm Ø Straight						
	15.8mm Ø Straight	●	●				
	M10 Stepped thread			●	●	●	●
	17mm Ø Tapered						
Spark arrester		(●)	(●)	(●)	(●)	(●)	(●)
Fuel tank		●	●	●	●	●	●
Oil level switch				●	●		
Engine stop switch		●	●	●	●	●	●
Oil alert				●	●		

## PARTS CATALOGUE NEWS

BOOKNo. : 13Z4C601

Block No.	Ref. No.	Part No.	Description	Reqd. QTY		Base Part No.	Parts catalogue code
				GXH 50 U			
E-7	6	90741-959-000	KEY, 5MM .....	(1)		90741-ZM7-000	QEBU
E-11	1	28400-ZM7-V32	STARTER ASSY., RECOIL .....	1		28400-ZM7-V31	QEBU
	9	28461-ZH8-013	GRIP, STARTER .....	1		28461-ZH8-003	QEBU
E-15	5	17230-ZM7-010	COVER COMP., AIR CLEANER .....	1		17230-ZM7-000	
	6	17231-ZM7-010	COVER, AIR CLEANER .....	1		17231-ZM7-000	
E-17	2	17511-Z4C-810	TANK, FUEL .....	1		17511-Z4C-000	
E-28	9		MARK, OPERATOR CAUTION (PICTOGRAPH)	0		87519-Z4C-000	QEBU
		87516-Z4C-000	MARK, OPERATOR CAUTION (ENGLISH)	1		87519-Z4C-000	WKE2, WK2
	10		MARK, OPERATOR CAUTION (ENGLISH)	0		87516-Z4C-000	WKE2, WK2
	11	87519-Z4C-000	MARK, OPERATOR CAUTION (PICTOGRAPH)	1			



# PARTS CATALOGUE NEWS

Honda Motor Co., Ltd. Service Division

## PARTS CATALOGUE - CORRECTED

Printed in Japan

CODE NO.	BOOKLET TYPE	13Z4C601
	MICRO-FICHE	13Z4C6EA/FA
PARTS CATALOGUE NEWS	GXH50U	
NEWS NO.	016	

Block No.	Ref. No.	Note	Part No.	Description	Reqd. QTY	Serial No.	Parts catalogue code
					GXH 50 U		
E-11	1	L	28400-ZM7-V31	STARTER ASSY., RECOIL .....	1	----- 1096348	QEB2, QEB4, QXB4
		T	28400-ZM7-V32	.....	1	----- -----	QEBU
	9	L	28461-ZH8-003	GRIP, STARTER .....	1	1096349 -----	QEB2, QEB4, QXB4
					1	----- 1096348	QEB2, QEB4, QXB4
		T	28461-ZH8-013	.....	1	----- -----	QEBU
					1	1096349 -----	QEB2, QEB4, QXB4

NOTE A:PART NO. CHANGE D:NEWLY PROVIDED E:PART NO.DELETION K:REQUIRED NO. CORRECTION L:APPLICATION SERIAL NO. CORRECTION  
T:APPLICATION CORRECTION Z:REMARKS CHANGE